



Office of Missouri State Auditor
Nicole Galloway, CPA

Missouri Statewide Performance
Indicators:
A National Comparison

Missouri Statewide Performance Indicators: A National Comparison

Table of Contents

State Auditor's Letter	2
<hr/>	
Statewide Performance Indicators	Economy 3-10 Household Median Income: 2015 4 Job Growth Rate: 2014-2015 5 Unemployment Rate: December 2016..... 6 State and Local Tax Revenue as a Percent of Personal Income: 2013 7 State Cigarette Tax, in Dollars: 2016..... 8 Percent of Population in Poverty: 2015 9 Percent of Children in Poverty: 2015..... 10 Education 11-20 4th Grade Average NAEP Reading Scores: 2015..... 12 4th Grade Average NAEP Math Scores: 2015 13 8th Grade Average NAEP Reading Scores: 2015..... 14 8th Grade Average NAEP Math Scores: 2015 15 ACT Average Score: 2016..... 16 Percent of Population with High School Diploma: 2015..... 17 Percent of Population with Bachelor's Degree: 2015 18 Per Pupil State and Local Government Expenditures for Elementary and Secondary Education: 2014 19 Per Capita State Expenditures for Higher Education: 2014..... 20 Civic Involvement 21-23 Voter Turnout Rate, Presidential Election: 2016..... 22 Voter Turnout Rate, Mid-Term Election: 2014 23 Health 24-29 Percent of Population who are Adult Smokers: 2015 25 Percent of Population who are Overweight or Obese: 2014 26 Teen Birth Rate, Births per 1,000 Women: 2015 27 Percent of Population without Health Insurance: 2015 28 Per Capita State Medicaid Expenditures: 2015 29 Crime 30-32 Violent Crime Rate, per 100,000 Inhabitants: 2015 31 Property Crime Rate, per 100,000 Inhabitants: 2015..... 32 Transportation 33-36 State Gasoline Tax, in Cents: 2017..... 34 Percent of Roads in Mediocre or Poor Condition: 2013..... 35 Percent of Bridges that are Deficient or Functionally Obsolete: 2014 36



NICOLE GALLOWAY, CPA **Missouri State Auditor**

Honorable Eric R. Greitens, Governor
and
Members of the General Assembly
Jefferson City, Missouri

The objective of this report was to present compiled comparative data on various policy and performance issue areas to:

1. Provide comparative information to Missouri legislators, other elected officials, and citizens.
2. Without comment, or drawing conclusions, allow the comparative data and rankings to stand alone as indicators.
3. Publish the report in a technical format that provides information, and trends when classifiable, without presumptions or findings.

Data collection for this report was performed by the Harry S Truman School of Public Affairs' Institute of Public Policy at the University of Missouri - Columbia.

Many policymakers have found that monitoring performance indicators can provide valuable information regarding policy development, as well as government action. Similar reports conducted elsewhere have been helpful in providing a snapshot as to where states are positioned in relation to each other in critical areas dealing with the economy, health, crime, education, transportation, and civic involvement. Comparative analysis can serve to help measure progress made in relation to others and is becoming increasingly more important for generally establishing the direction states are headed in a variety of policy areas. Also, because statistical information is constantly evolving, updated information can almost always be found from sources drawn upon in this report, as well as from other qualified monitoring sources.

A handwritten signature in black ink that reads "Nicole R. Galloway".

Nicole R. Galloway, CPA
State Auditor

The following auditors participated in the preparation of this report:

Director of Audits:	Kim Spraggs, CPA
Audit Manager:	Dennis Lockwood, CPA
In-Charge Auditor:	Tessa Rusatsi, CPA
Staff Auditor:	Stephanie M. Kroner



Missouri Statewide Performance Indicators: A National Comparison

Economy

The following indicators were selected to measure the performance of Missouri's economy:

Household Median Income - The median household income is the amount that divides households into two equal groups, one having incomes above that amount and the other having incomes below that amount. The data was reported by the Census Bureau. In 2015, Missouri ranked 36th with a household median income below the national average.

Job Growth Rate - Job growth statistics represent the growth in the number of jobs in the state. The data was reported in *State rankings 2016: A Statistical View of America*, CQ Press. In 2014-2015, Missouri ranked 35th with a job growth rate below the national average.

Unemployment Rate - Unemployment rate data is obtained by conducting a monthly sample survey called the Current Population Survey (CPS) to measure the extent of unemployment in the country. There are approximately 60,000 occupied households included in the survey. The CPS sample is selected to be representative of the entire population of the United States. The survey is designed so that each person age 16 and over who is neither in an institution (for example, correctional facilities and residential nursing and mental health care facilities) nor on active duty in the Armed Forces is counted and classified in only one group. The civilian labor force is made up of the sum of the employed and the unemployed. The data was reported by the Bureau of Labor Statistics. In December 2016, Missouri ranked 23rd with an unemployment rate better than the national average.

State and Local Tax Revenue as a Percent of Personal Income - The amount of state and local taxes collected, divided by personal income. The data was reported by the Urban-Brookings Tax Policy Center. In 2013, Missouri ranked 48th with a rate significantly lower than the national average.

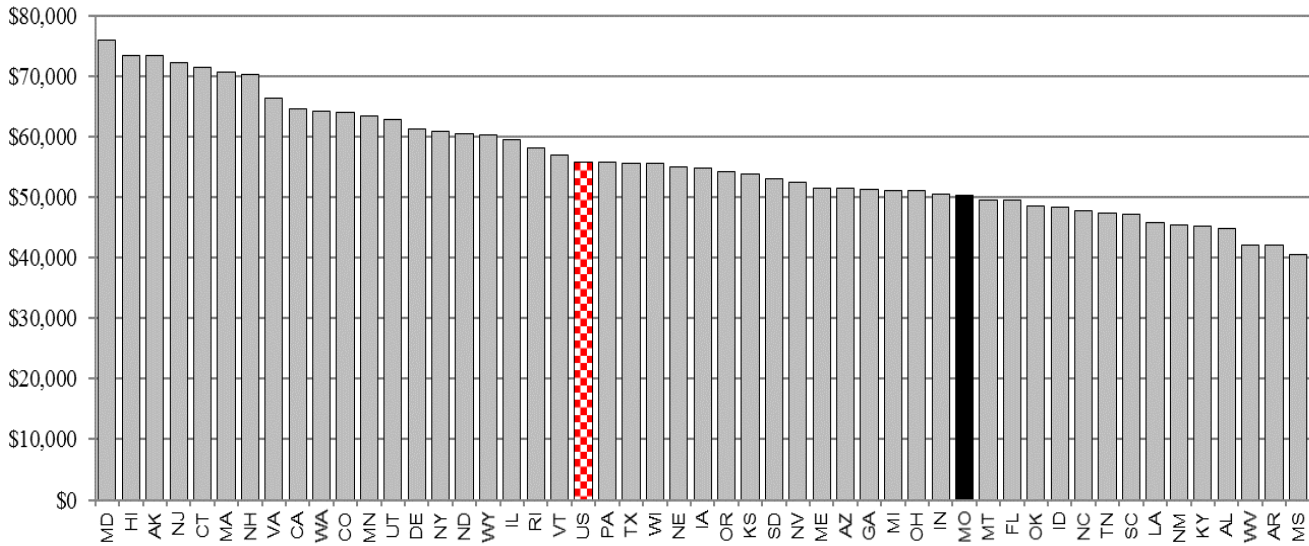
State Cigarette Tax - The amount of tax levied, in dollars, by a state on the sale of a pack of cigarettes. The data was reported by the Federation of Tax Administrators. Missouri continues to rank 50th with the lowest cigarette tax in the country and a state cigarette tax rate significantly below the national average.

Percent of Population in Poverty - The percent of the population that has a yearly income below the federal poverty level. The data was reported by the Census Bureau. In 2015, Missouri ranked 29th with a rate slightly above the national average.

Percent of Children in Poverty - The percent of children under age 18 living in a household whose yearly income is below the federal poverty level. The data was reported by the Census Bureau. In 2015, Missouri ranked 28th with a rate slightly less than the national average.

Economy

Household Median Income: 2015



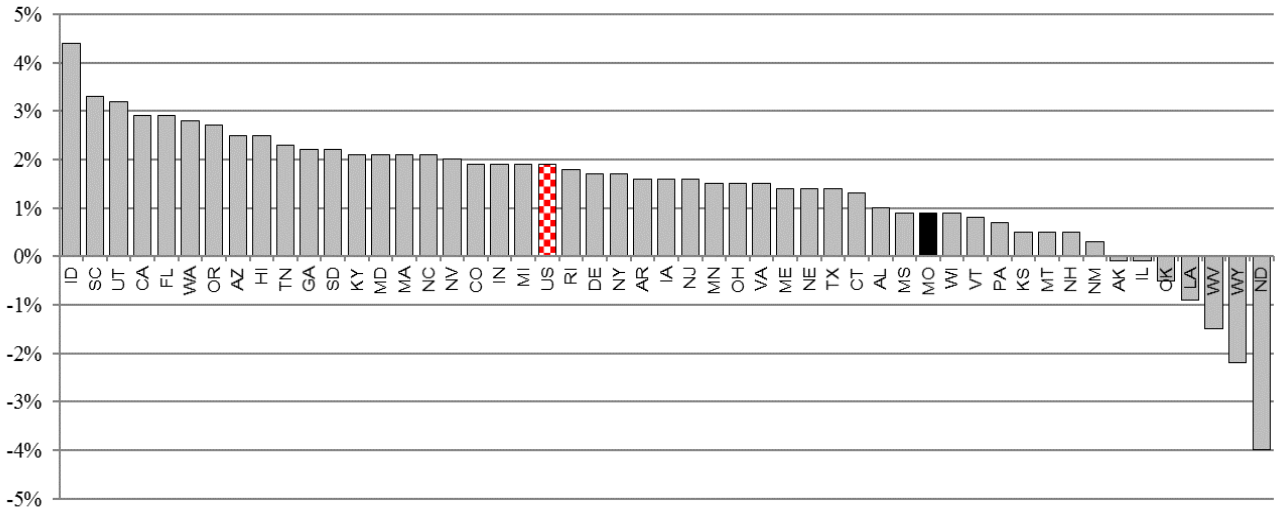
Rank	State	Dollars	Rank	State	Dollars
1	Maryland	\$75,847	26	Oregon	\$54,148
2	Hawaii	\$73,486	27	Kansas	\$53,906
3	Alaska	\$73,355	28	South Dakota	\$53,017
4	New Jersey	\$72,222	29	Nevada	\$52,431
5	Connecticut	\$71,346	30	Maine	\$51,494
6	Massachusetts	\$70,628	31	Arizona	\$51,492
7	New Hampshire	\$70,303	32	Georgia	\$51,244
8	Virginia	\$66,262	33	Michigan	\$51,084
9	California	\$64,500	34	Ohio	\$51,075
10	Washington	\$64,129	35	Indiana	\$50,532
11	Colorado	\$63,909	36	Missouri	\$50,238
12	Minnesota	\$63,488	37	Montana	\$49,509
13	Utah	\$62,912	38	Florida	\$49,426
14	Delaware	\$61,255	39	Oklahoma	\$48,568
15	New York	\$60,850	40	Idaho	\$48,275
15	North Dakota	\$60,557	41	North Carolina	\$47,830
17	Wyoming	\$60,214	42	Tennessee	\$47,275
18	Illinois	\$59,588	43	South Carolina	\$47,238
19	Rhode Island	\$58,073	44	Louisiana	\$45,727
20	Vermont	\$56,990	45	New Mexico	\$45,382
	US Average	\$55,775	45	Kentucky	\$45,215
21	Pennsylvania	\$55,702	47	Alabama	\$44,765
22	Texas	\$55,653	48	West Virginia	\$42,019
23	Wisconsin	\$55,638	49	Arkansas	\$41,995
24	Nebraska	\$54,996	50	Mississippi	\$40,593
25	Iowa	\$54,736			

Year	Missouri		US Average
	Dollars	Rank	Dollars
2015	\$50,238	36	\$55,775
2014	\$48,363	36	\$53,657
2013	\$46,931	37	\$52,250

Source: census.gov

Economy

Job Growth Rate: 2014-2015

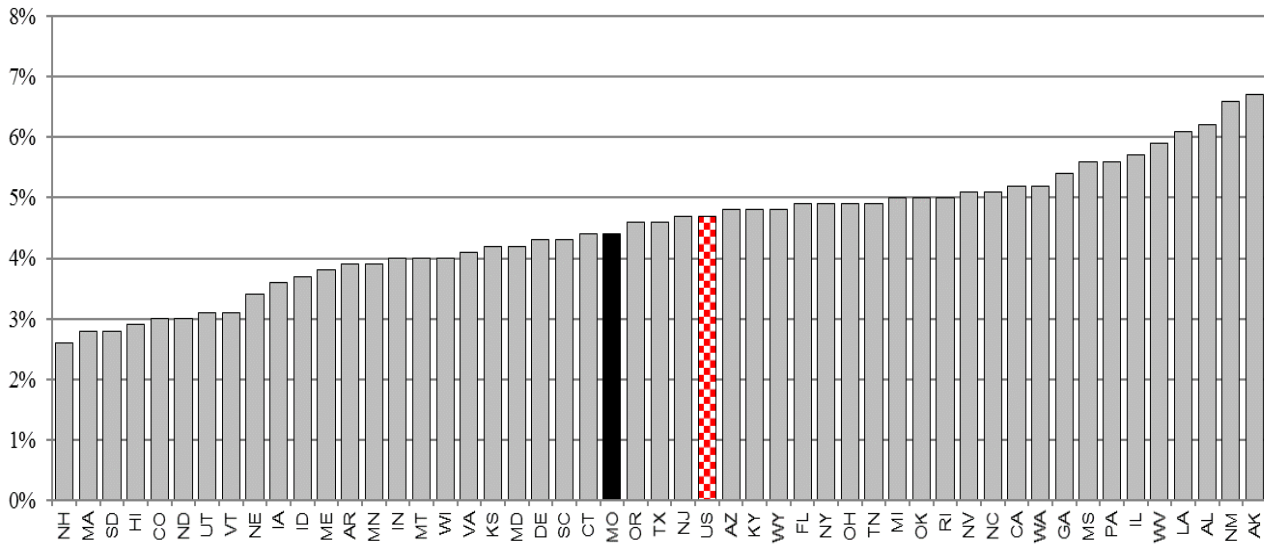


Rank	State	Percent	Rank	State	Percent
1	Idaho	4.4%	24	New Jersey	1.6%
2	South Carolina	3.3%	27	Minnesota	1.5%
3	Utah	3.2%	27	Ohio	1.5%
4	California	2.9%	27	Virginia	1.5%
4	Florida	2.9%	30	Maine	1.4%
6	Washington	2.8%	30	Nebraska	1.4%
7	Oregon	2.7%	30	Texas	1.4%
8	Arizona	2.5%	33	Connecticut	1.3%
8	Hawaii	2.5%	34	Alabama	1.0%
10	Tennessee	2.3%	35	Mississippi	0.9%
11	Georgia	2.2%	35	Missouri	0.9%
11	South Dakota	2.2%	35	Wisconsin	0.9%
13	Kentucky	2.1%	38	Vermont	0.8%
13	Maryland	2.1%	39	Pennsylvania	0.7%
13	Massachusetts	2.1%	40	Kansas	0.5%
13	North Carolina	2.1%	40	Montana	0.5%
17	Nevada	2.0%	40	New Hampshire	0.5%
18	Colorado	1.9%	43	New Mexico	0.3%
18	Indiana	1.9%	44	Alaska	-0.1%
18	Michigan	1.9%	44	Illinois	-0.1%
	US Average	1.9%	46	Oklahoma	-0.5%
21	Rhode Island	1.8%	47	Louisiana	-0.9%
22	Delaware	1.7%	48	West Virginia	-1.5%
22	New York	1.7%	49	Wyoming	-2.2%
24	Arkansas	1.6%	50	North Dakota	-4.0%
24	Iowa	1.6%			

Year	Missouri		US Average
	Percent	Rank	Percent
2014-15	0.9%	35	1.9%
2013-14	1.6%	22	2.1%
2012-13	1.3%	24	1.6%

Source: State Rankings 2016: A Statistical View of America, CQ Press

Unemployment Rate: December 2016

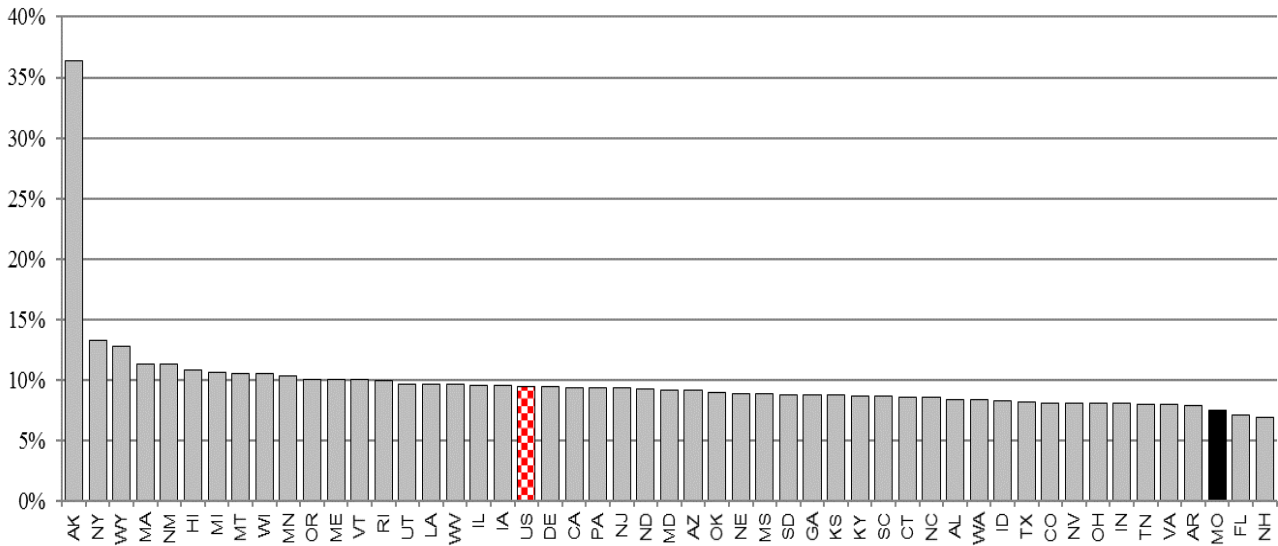


Rank	State	Percent	Rank	State	Percent
1	New Hampshire	2.6%	27	New Jersey	4.7%
2	Massachusetts	2.8%		US Average	4.7%
2	South Dakota	2.8%	28	Arizona	4.8%
4	Hawaii	2.9%	28	Kentucky	4.8%
5	Colorado	3.0%	28	Wyoming	4.8%
5	North Dakota	3.0%	31	Florida	4.9%
7	Utah	3.1%	31	New York	4.9%
7	Vermont	3.1%	31	Ohio	4.9%
9	Nebraska	3.4%	31	Tennessee	4.9%
10	Iowa	3.6%	35	Michigan	5.0%
11	Idaho	3.7%	35	Oklahoma	5.0%
12	Maine	3.8%	35	Rhode Island	5.0%
13	Arkansas	3.9%	38	Nevada	5.1%
13	Minnesota	3.9%	38	North Carolina	5.1%
15	Indiana	4.0%	40	California	5.2%
15	Montana	4.0%	40	Washington	5.2%
15	Wisconsin	4.0%	42	Georgia	5.4%
18	Virginia	4.1%	43	Mississippi	5.6%
19	Kansas	4.2%	43	Pennsylvania	5.6%
19	Maryland	4.2%	45	Illinois	5.7%
21	Delaware	4.3%	46	West Virginia	5.9%
21	South Carolina	4.3%	47	Louisiana	6.1%
23	Connecticut	4.4%	48	Alabama	6.2%
23	Missouri	4.4%	49	New Mexico	6.6%
25	Oregon	4.6%	50	Alaska	6.7%
25	Texas	4.6%			

Year	Missouri		US Average
	Percent	Rank	Percent
2016	4.4%	23	4.7%
2015	4.4%	19	5.0%
2014	5.4%	21	5.6%

Economy

State and Local Tax Revenue as a Percent of Personal Income: 2013



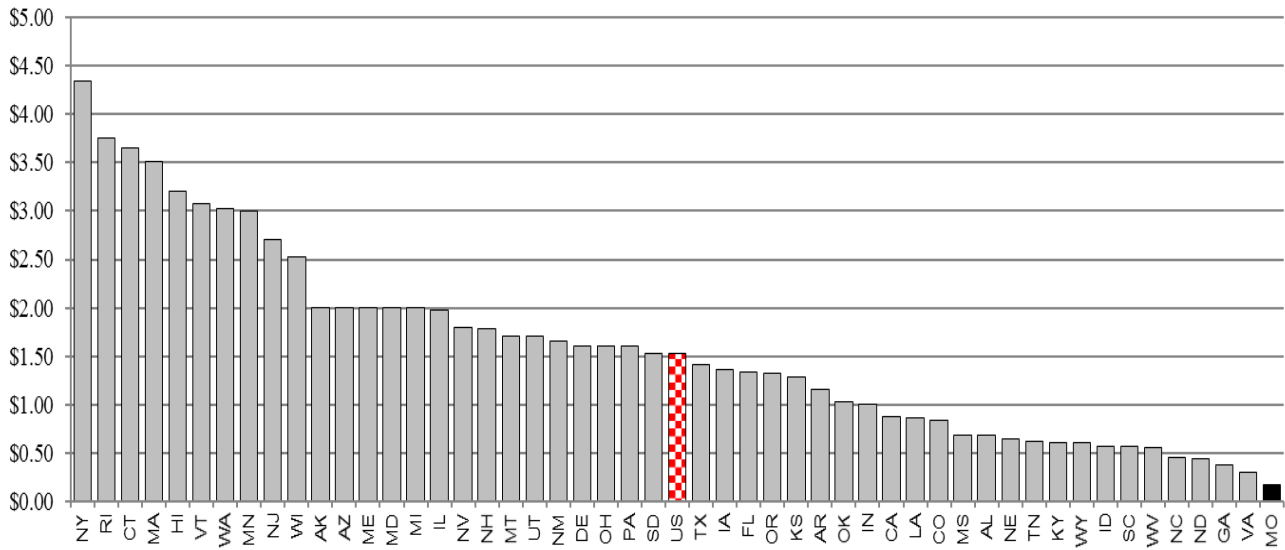
Rank	State	Percent	Rank	State	Percent
1	Alaska	36.40%	26	Arizona	9.13%
2	New York	13.30%	27	Oklahoma	8.98%
3	Wyoming	12.84%	28	Nebraska	8.93%
4	Massachusetts	11.29%	29	Mississippi	8.87%
5	New Mexico	11.29%	30	South Dakota	8.83%
6	Hawaii	10.85%	31	Georgia	8.79%
7	Michigan	10.61%	32	Kansas	8.78%
8	Montana	10.58%	33	Kentucky	8.71%
9	Wisconsin	10.52%	34	South Carolina	8.67%
10	Minnesota	10.32%	35	Connecticut	8.62%
11	Oregon	10.05%	36	North Carolina	8.60%
12	Maine	10.04%	37	Alabama	8.39%
13	Vermont	10.03%	38	Washington	8.39%
14	Rhode Island	9.95%	39	Idaho	8.32%
15	Utah	9.70%	40	Texas	8.15%
16	Louisiana	9.63%	41	Colorado	8.12%
17	West Virginia	9.62%	42	Nevada	8.11%
18	Illinois	9.59%	43	Ohio	8.10%
19	Iowa	9.56%	44	Indiana	8.09%
	US Average	9.46%	45	Tennessee	8.03%
20	Delaware	9.46%	46	Virginia	7.97%
21	California	9.36%	47	Arkansas	7.89%
22	Pennsylvania	9.34%	48	Missouri	7.55%
23	New Jersey	9.33%	49	Florida	7.15%
24	North Dakota	9.30%	50	New Hampshire	6.96%
25	Maryland	9.21%			

Year	Missouri		US Average
	Percent	Rank	Percent
2013	7.55%	48	9.46%
2012	8.10%	44	9.69%
2011	8.32%	46	9.93%

Source: taxpolicycenter.org

Economy

State Cigarette Tax, in Dollars: 2016



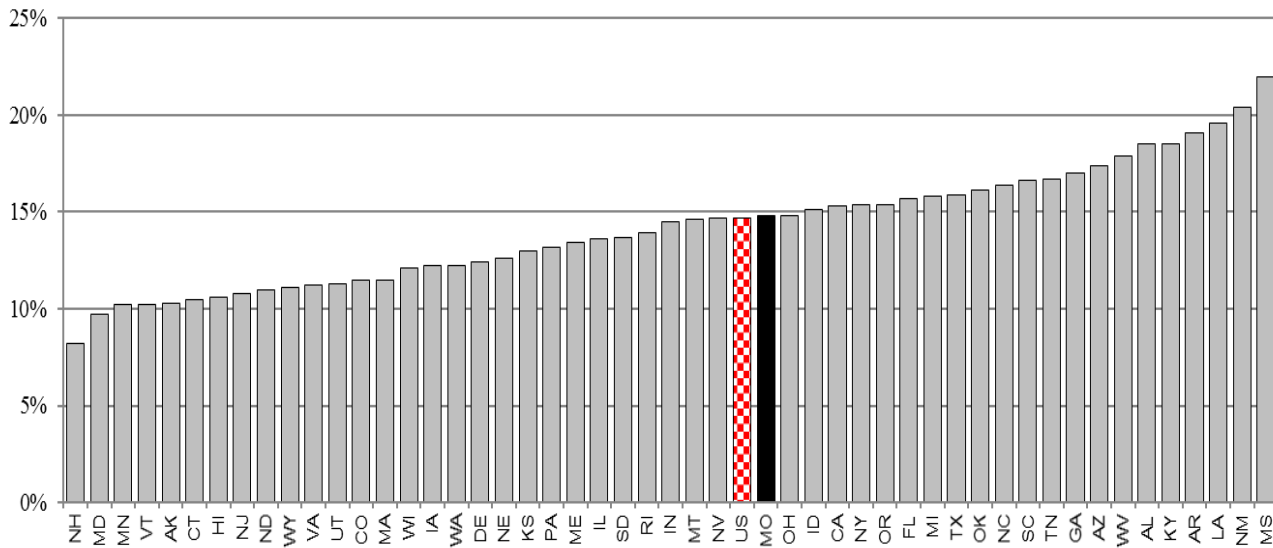
Rank	State	Tax	Rank	State	Tax
1	New York	\$4.35	26	Texas	\$1.41
2	Rhode Island	\$3.75	27	Iowa	\$1.36
3	Connecticut	\$3.65	28	Florida	\$1.34
4	Massachusetts	\$3.51	29	Oregon	\$1.32
5	Hawaii	\$3.20	30	Kansas	\$1.29
6	Vermont	\$3.08	31	Arkansas	\$1.15
7	Washington	\$3.03	32	Oklahoma	\$1.03
8	Minnesota	\$3.00	33	Indiana	\$1.00
9	New Jersey	\$2.70	34	California	\$.87
10	Wisconsin	\$2.52	35	Louisiana	\$.86
11	Alaska	\$2.00	36	Colorado	\$.84
11	Arizona	\$2.00	37	Mississippi	\$.68
11	Maine	\$2.00	37	Alabama	\$.68
11	Maryland	\$2.00	39	Nebraska	\$.64
11	Michigan	\$2.00	40	Tennessee	\$.62
16	Illinois	\$1.98	41	Kentucky	\$.60
17	Nevada	\$1.80	41	Wyoming	\$.60
18	New Hampshire	\$1.78	43	Idaho	\$.57
19	Montana	\$1.70	43	South Carolina	\$.57
19	Utah	\$1.70	45	West Virginia	\$.55
21	New Mexico	\$1.66	46	North Carolina	\$.45
22	Delaware	\$1.60	47	North Dakota	\$.44
22	Ohio	\$1.60	48	Georgia	\$.37
22	Pennsylvania	\$1.60	49	Virginia	\$.30
25	South Dakota	\$1.53	50	Missouri	\$.17
	US Average	\$1.53			

Year	Missouri		US Average	
	Tax	Rank	Tax	
2016	\$1.17	50	\$1.53	
2015	\$1.17	50	\$1.36	
2014	\$1.17	50	\$1.36	

Source: taxadmin.org and taxpolicycenter.org

Economy

Percent of Population in Poverty: 2015



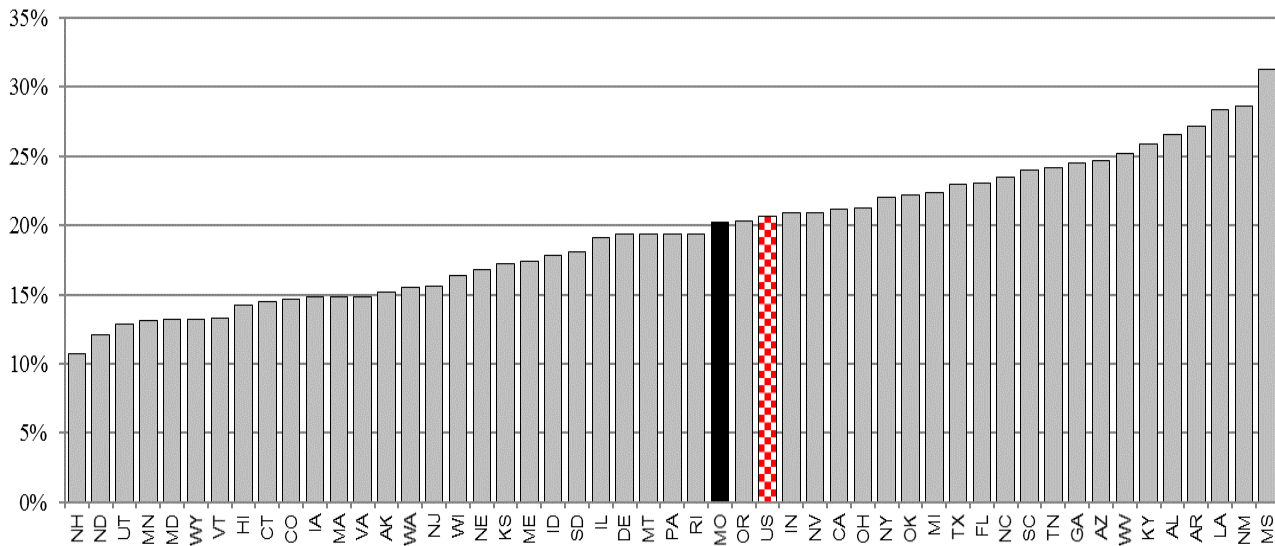
Rank	State	Percent	Rank	State	Percent
1	New Hampshire	8.2%	27	Montana	14.6%
2	Maryland	9.7%	28	Nevada	14.7%
3	Minnesota	10.2%		US Average	14.7%
3	Vermont	10.2%	29	Missouri	14.8%
5	Alaska	10.3%	29	Ohio	14.8%
6	Connecticut	10.5%	31	Idaho	15.1%
7	Hawaii	10.6%	32	California	15.3%
8	New Jersey	10.8%	33	New York	15.4%
9	North Dakota	11.0%	33	Oregon	15.4%
10	Wyoming	11.1%	35	Florida	15.7%
11	Virginia	11.2%	36	Michigan	15.8%
12	Utah	11.3%	37	Texas	15.9%
13	Colorado	11.5%	38	Oklahoma	16.1%
13	Massachusetts	11.5%	39	North Carolina	16.4%
15	Wisconsin	12.1%	40	South Carolina	16.6%
16	Iowa	12.2%	41	Tennessee	16.7%
16	Washington	12.2%	42	Georgia	17.0%
18	Delaware	12.4%	43	Arizona	17.4%
19	Nebraska	12.6%	44	West Virginia	17.9%
20	Kansas	13.0%	45	Alabama	18.5%
21	Pennsylvania	13.2%	45	Kentucky	18.5%
22	Maine	13.4%	47	Arkansas	19.1%
23	Illinois	13.6%	48	Louisiana	19.6%
24	South Dakota	13.7%	49	New Mexico	20.4%
25	Rhode Island	13.9%	50	Mississippi	22.0%
26	Indiana	14.5%			

Year	Missouri		US Average
	Percent	Rank	Percent
2015	14.8%	29	14.7%
2014	15.5%	30	15.5%
2013	15.9%	27	15.8%

Source: census.gov

Economy

Percent of Children in Poverty: 2015



Rank	State	Percent	Rank	State	Percent
1	New Hampshire	10.7%	24	Rhode Island	19.4%
2	North Dakota	12.1%	28	Missouri	20.2%
3	Utah	12.9%	29	Oregon	20.3%
4	Minnesota	13.1%		US Average	20.7%
5	Maryland	13.2%	30	Indiana	20.9%
5	Wyoming	13.2%	30	Nevada	20.9%
7	Vermont	13.3%	32	California	21.2%
8	Hawaii	14.2%	33	Ohio	21.3%
9	Connecticut	14.5%	34	New York	22.0%
10	Colorado	14.7%	35	Oklahoma	22.2%
11	Iowa	14.8%	36	Michigan	22.4%
11	Massachusetts	14.8%	37	Texas	23.0%
11	Virginia	14.8%	38	Florida	23.1%
14	Alaska	15.2%	39	North Carolina	23.5%
15	Washington	15.5%	40	South Carolina	24.0%
16	New Jersey	15.6%	41	Tennessee	24.2%
17	Wisconsin	16.4%	42	Georgia	24.5%
18	Nebraska	16.8%	43	Arizona	24.7%
19	Kansas	17.2%	44	West Virginia	25.2%
20	Maine	17.4%	45	Kentucky	25.9%
21	Idaho	17.8%	46	Alabama	26.6%
22	South Dakota	18.1%	47	Arkansas	27.2%
23	Illinois	19.1%	48	Louisiana	28.4%
24	Delaware	19.4%	49	New Mexico	28.6%
24	Montana	19.4%	50	Mississippi	31.3%
24	Pennsylvania	19.4%			

Year	Missouri		US Average
	Percent	Rank	Percent
2015	20.2%	28	20.7%
2014	21.1%	28	21.7%
2013	22.2%	29	22.2%

Source: census.gov



Missouri Statewide Performance Indicators: A National Comparison

Education

The following indicators were selected to measure effectiveness of education in Missouri:

NAEP Scores - The National Assessment of Educational Progress (NAEP) is the only nationally representative and continuing assessment of what American students know in various subject areas. NAEP assessments are administered uniformly using the same sets of test booklets across the nation. The test serves as a common metric for all states and selected urban districts. The assessment stays mostly the same from year to year, with only carefully documented changes. The data was reported by the National Center for Education Statistics. In 2015, Missouri ranked 24th in 4th grade reading, and 21st in 8th grade reading. In 2015, Missouri ranked 29th in 4th grade math, and 29th in 8th grade math. The Missouri 4th grade reading average score was equal to the US average, and the Missouri 8th grade reading average score was slightly above the US average. The Missouri 4th grade math and Missouri 8th grade math average scores were slightly below the US average.

ACT Average Score - The ACT is a national college admissions examination that consists of subject area tests in: English, Mathematics, Reading, and Science plus a writing test. ACT results are accepted by all 4-year colleges and universities in the US. The ACT includes 215 multiple-choice questions and takes approximately 4 hours to complete. The data was reported by ACT, Inc. In 2016, Missouri ranked 34th with an ACT average score slightly lower than the national average.

Percent of Population with High School Diploma - Estimates the percent of the total population that is at least 25 years old with a high school diploma or equivalent. The data was reported by the Census Bureau. In 2015, Missouri ranked 27th with a rate above the national average.

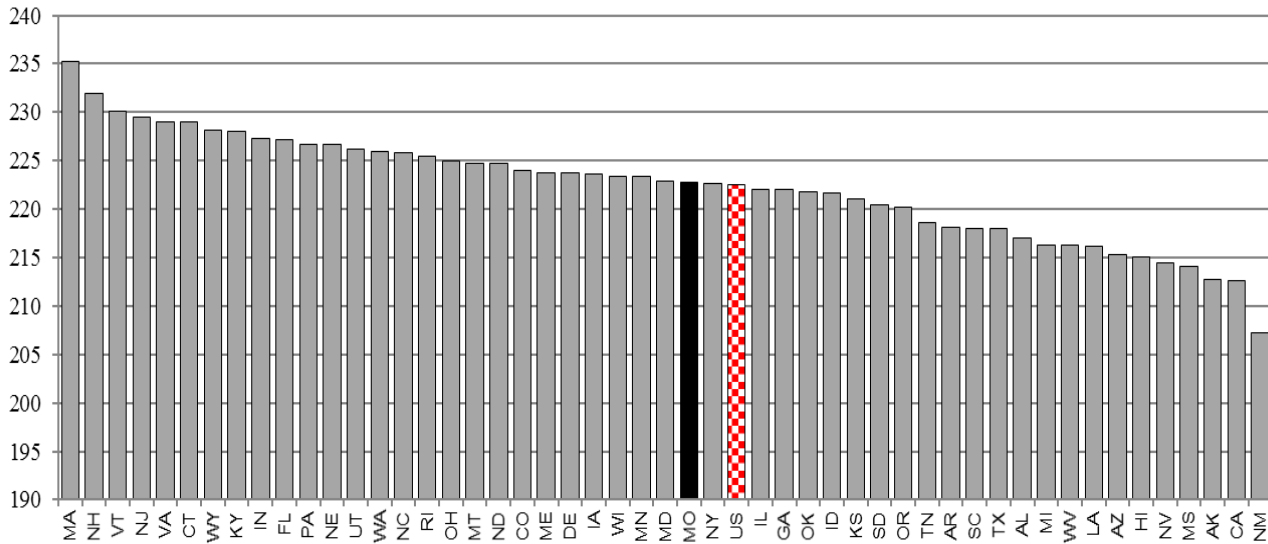
Percent of Population with Bachelor's Degree - Estimates the percent of the total population that is at least 25 years old with a bachelor's degree or equivalent. The data was reported by the Census Bureau. In 2015, Missouri ranked 31st with a rate below the national average.

Per Pupil State and Local Government Expenditures for Elementary and Secondary Education - Estimates the combined per pupil state and local spending for elementary and secondary students. The data was reported by the Census Bureau. In 2014, Missouri ranked 30th with per pupil expenditures below the national average.

Per Capita State Expenditures for Higher Education - Estimates the per capita spending for higher education. The data was reported by the Census Bureau. In 2014, Missouri ranked 42nd with per capita higher education expenditures significantly below US per capita expenditures.

Education

4th Grade Average NAEP Reading Scores: 2015



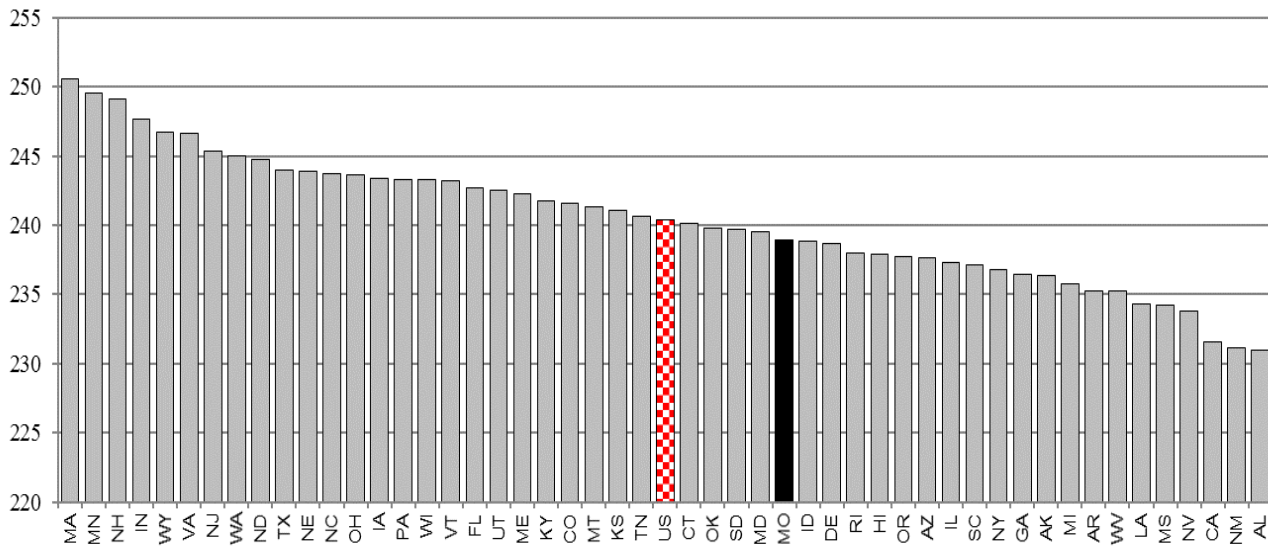
Rank	State	Score	Rank	State	Score
1	Massachusetts	235	24	Missouri	223
2	New Hampshire	232	24	New York	223
3	Vermont	230		US Average	223
4	New Jersey	229	29	Illinois	222
4	Virginia	229	29	Georgia	222
4	Connecticut	229	29	Oklahoma	222
7	Wyoming	228	29	Idaho	222
7	Kentucky	228	33	Kansas	221
9	Indiana	227	34	South Dakota	220
9	Florida	227	34	Oregon	220
9	Pennsylvania	227	36	Tennessee	219
9	Nebraska	227	37	Arkansas	218
13	Utah	226	37	South Carolina	218
13	Washington	226	37	Texas	218
13	North Carolina	226	40	Alabama	217
16	Rhode Island	225	41	Michigan	216
16	Ohio	225	41	West Virginia	216
16	Montana	225	41	Louisiana	216
16	North Dakota	225	44	Arizona	215
20	Colorado	224	44	Hawaii	215
20	Maine	224	46	Nevada	214
20	Delaware	224	46	Mississippi	214
20	Iowa	224	48	Alaska	213
24	Wisconsin	223	48	California	213
24	Minnesota	223	50	New Mexico	207
24	Maryland	223			

Year	Missouri		US Average	
	Score	Rank	Score	Rank
2015	223	24	223	
2013	222	27	222	
2011	220	30	221	

Source: nces.ed.gov

Education

4th Grade Average NAEP Math Scores: 2015



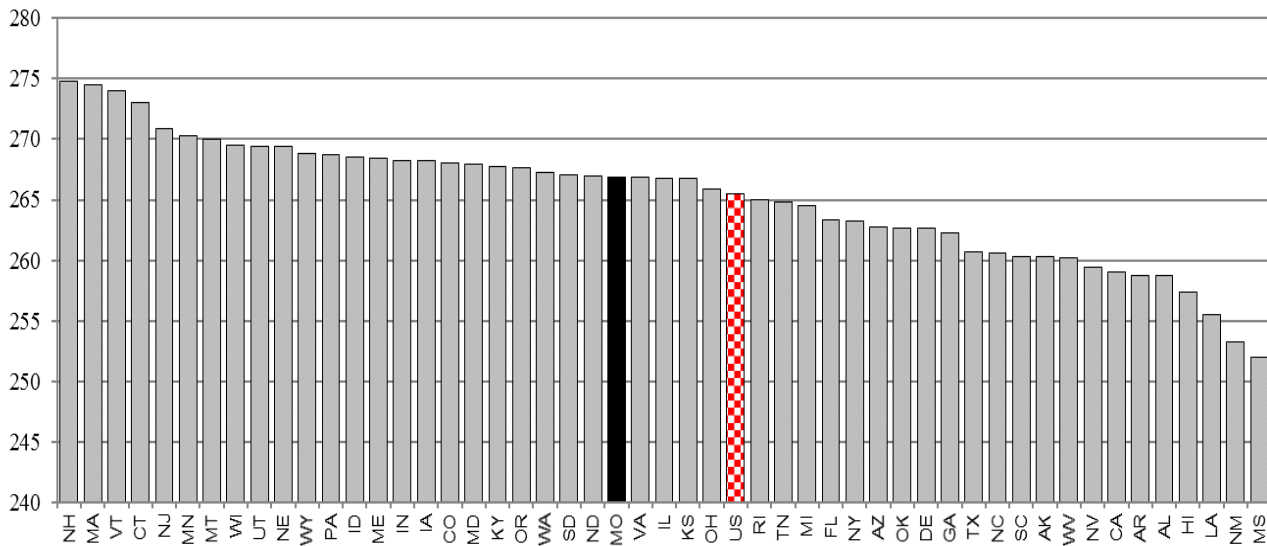
Rank	State	Score	Rank	State	Score
1	Massachusetts	251	26	Connecticut	240
2	Minnesota	250	26	Oklahoma	240
3	New Hampshire	249	26	South Dakota	240
4	Indiana	248	29	Maryland	239
5	Wyoming	247	29	Missouri	239
5	Virginia	247	29	Idaho	239
7	New Jersey	245	29	Delaware	239
7	Washington	245	33	Rhode Island	238
7	North Dakota	245	33	Hawaii	238
10	Texas	244	33	Oregon	238
10	Nebraska	244	33	Arizona	238
10	North Carolina	244	37	Illinois	237
10	Ohio	244	37	South Carolina	237
14	Iowa	243	37	New York	237
14	Pennsylvania	243	40	Georgia	236
14	Wisconsin	243	40	Alaska	236
14	Vermont	243	40	Michigan	236
14	Florida	243	43	Arkansas	235
14	Utah	243	43	West Virginia	235
20	Maine	242	45	Louisiana	234
20	Kentucky	242	45	Mississippi	234
20	Colorado	242	45	Nevada	234
23	Montana	241	48	California	232
23	Kansas	241	49	New Mexico	231
23	Tennessee	241	49	Alabama	231
	US Average	240			

Year	Missouri		US Average	
	Score	Rank	Score	
2015	239	29	240	
2013	240	32	242	
2011	240	27	241	

Source: nces.ed.gov

Education

8th Grade Average NAEP Reading Scores: 2015



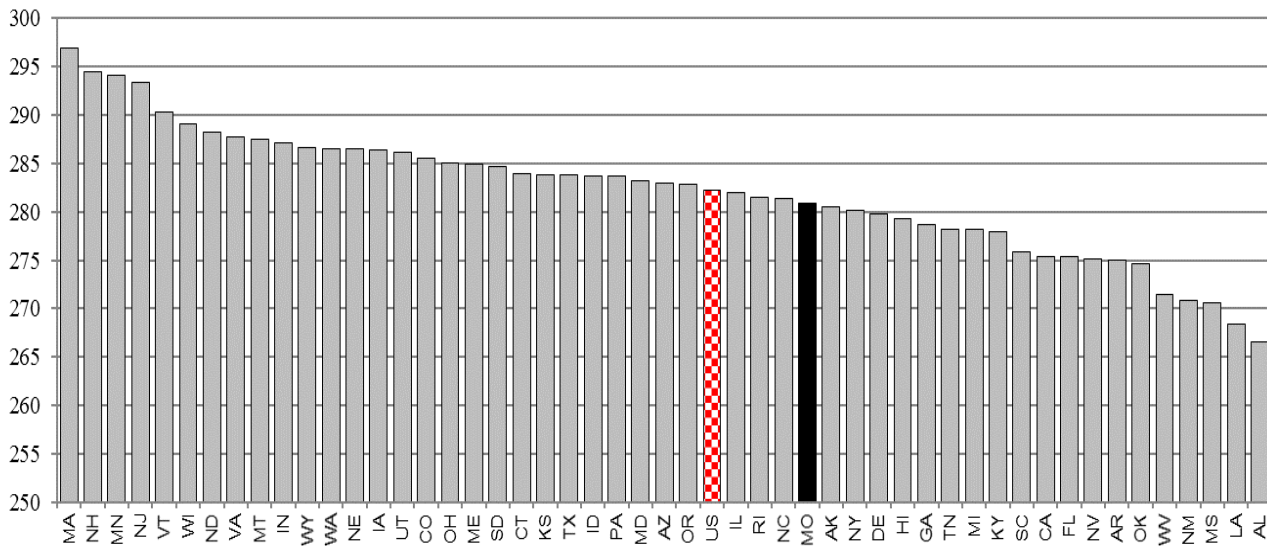
Rank	State	Score	Rank	State	Score
1	New Hampshire	275	21	Kansas	267
2	Massachusetts	274	28	Ohio	266
2	Vermont	274		US Average	265
4	Connecticut	273	29	Rhode Island	265
5	New Jersey	271	29	Tennessee	265
6	Minnesota	270	31	Michigan	264
6	Montana	270	32	Florida	263
6	Wisconsin	270	32	New York	263
9	Utah	269	32	Arizona	263
9	Nebraska	269	32	Oklahoma	263
9	Wyoming	269	32	Delaware	263
9	Pennsylvania	269	37	Georgia	262
9	Idaho	269	38	Texas	261
14	Maine	268	38	North Carolina	261
14	Indiana	268	40	South Carolina	260
14	Iowa	268	40	Alaska	260
14	Colorado	268	40	West Virginia	260
14	Maryland	268	43	Nevada	259
14	Kentucky	268	43	California	259
14	Oregon	268	43	Arkansas	259
21	Washington	267	43	Alabama	259
21	South Dakota	267	47	Hawaii	257
21	North Dakota	267	48	Louisiana	255
21	Missouri	267	49	New Mexico	253
21	Virginia	267	50	Mississippi	252
21	Illinois	267			

Year	Missouri		US Average	
	Score	Rank	Score	
2015	267	21	265	
2013	267	25	268	
2011	267	20	265	

Source: nces.ed.gov

Education

8th Grade Average NAEP Math Scores: 2015



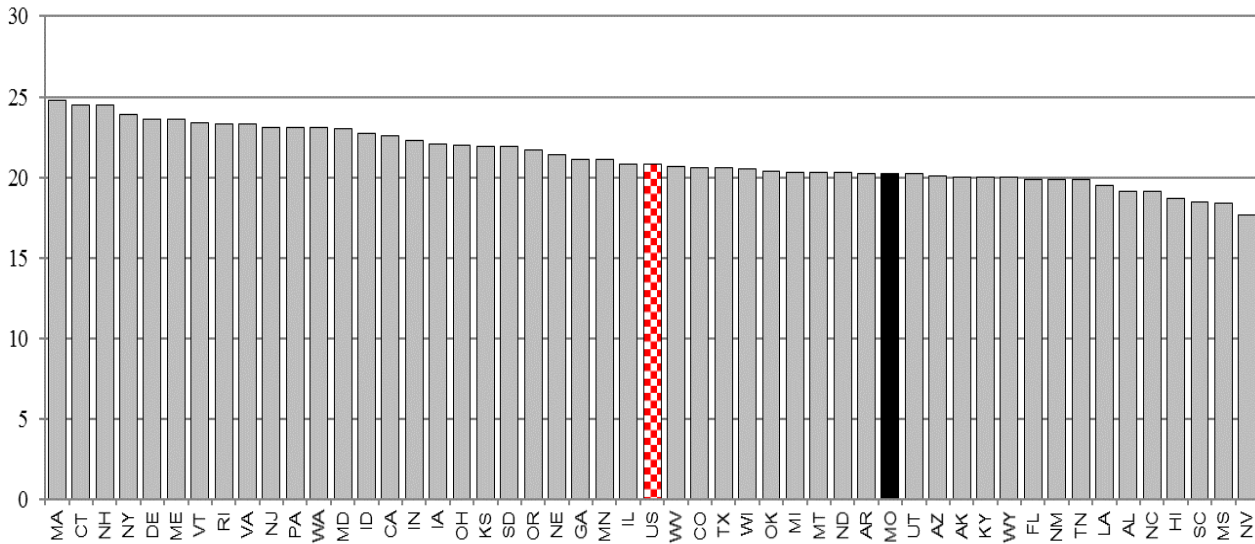
Rank	State	Score	Rank	State	Score
1	Massachusetts	297	25	Oregon	283
2	New Hampshire	294		US Average	282
2	Minnesota	294	28	Illinois	282
4	New Jersey	293	29	Rhode Island	281
5	Vermont	290	29	North Carolina	281
6	Wisconsin	289	29	Missouri	281
7	North Dakota	288	32	Alaska	280
7	Virginia	288	32	New York	280
9	Montana	287	32	Delaware	280
9	Indiana	287	35	Hawaii	279
9	Wyoming	287	35	Georgia	279
9	Washington	287	37	Tennessee	278
13	Nebraska	286	37	Michigan	278
13	Iowa	286	37	Kentucky	278
13	Utah	286	40	South Carolina	276
13	Colorado	286	41	California	275
17	Ohio	285	41	Florida	275
17	Maine	285	41	Nevada	275
17	South Dakota	285	41	Arkansas	275
20	Connecticut	284	41	Oklahoma	275
20	Kansas	284	46	West Virginia	271
20	Texas	284	46	New Mexico	271
20	Idaho	284	46	Mississippi	271
20	Pennsylvania	284	49	Louisiana	268
25	Maryland	283	50	Alabama	267
25	Arizona	283			

Year	Missouri		US Average	
	Score	Rank	Score	Rank
2015	281	29	282	
2013	283	30	285	
2011	282	32	284	

Source: nces.ed.gov

Education

ACT Average Score: 2016



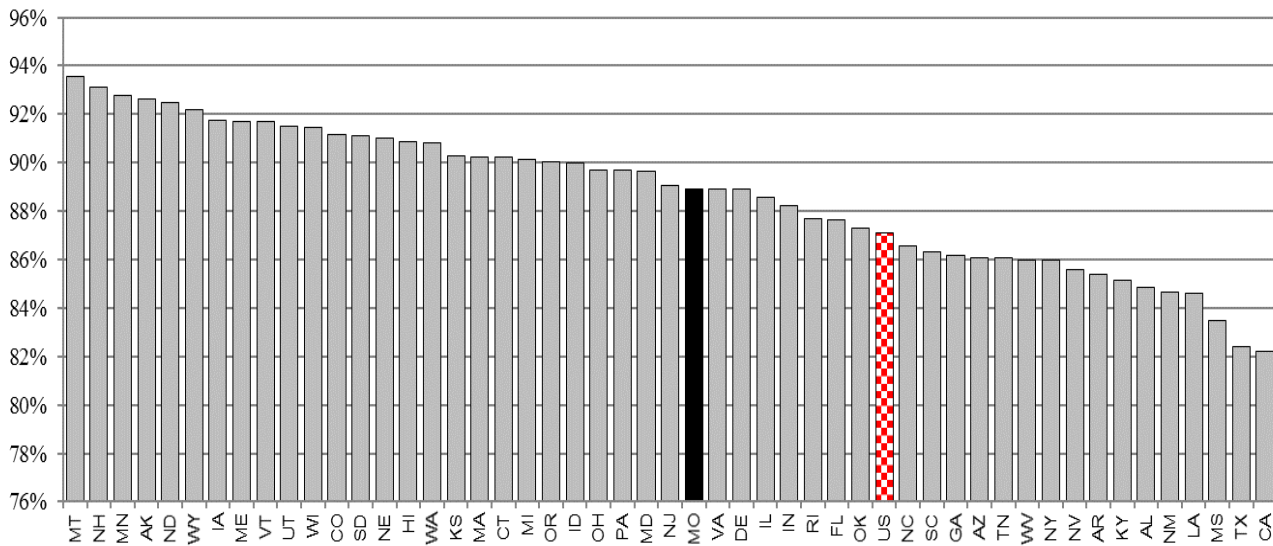
Rank	State	Score	Rank	State	Score
1	Massachusetts	24.8	26	West Virginia	20.7
2	Connecticut	24.5	27	Colorado	20.6
2	New Hampshire	24.5	27	Texas	20.6
4	New York	23.9	29	Wisconsin	20.5
5	Delaware	23.6	30	Oklahoma	20.4
5	Maine	23.6	31	Michigan	20.3
7	Vermont	23.4	31	Montana	20.3
8	Rhode Island	23.3	31	North Dakota	20.3
8	Virginia	23.3	34	Arkansas	20.2
10	New Jersey	23.1	34	Missouri	20.2
10	Pennsylvania	23.1	34	Utah	20.2
10	Washington	23.1	37	Arizona	20.1
13	Maryland	23.0	38	Alaska	20.0
14	Idaho	22.7	38	Kentucky	20.0
15	California	22.6	38	Wyoming	20.0
16	Indiana	22.3	41	Florida	19.9
17	Iowa	22.1	41	New Mexico	19.9
18	Ohio	22.0	41	Tennessee	19.9
19	Kansas	21.9	44	Louisiana	19.5
19	South Dakota	21.9	45	Alabama	19.1
21	Oregon	21.7	45	North Carolina	19.1
22	Nebraska	21.4	47	Hawaii	18.7
23	Georgia	21.1	48	South Carolina	18.5
23	Minnesota	21.1	49	Mississippi	18.4
25	Illinois	20.8	50	Nevada	17.7
	US Average	20.8			

Year	Missouri		US Average	
	Score	Rank	Score	
2016	20.2	34	20.8	
2015	21.7	23	21.0	
2014	21.8	23	21.0	

Source: act.org

Education

Percent of Population with High School Diploma: 2015



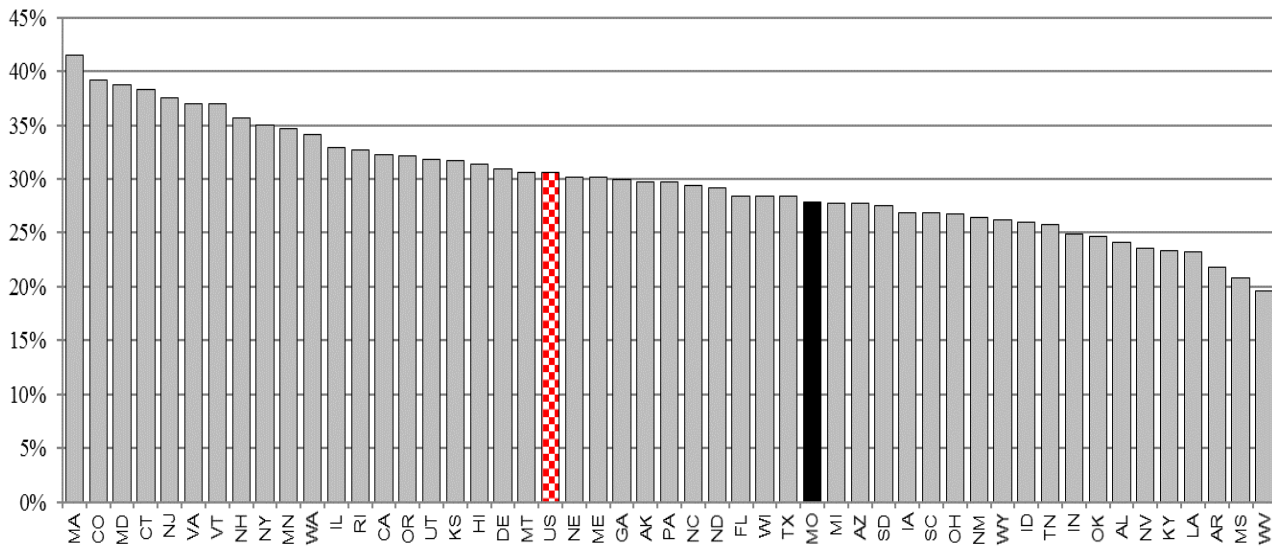
Rank	State	Percent	Rank	State	Percent
1	Montana	93.5%	27	Missouri	88.9%
2	New Hampshire	93.1%	27	Virginia	88.9%
3	Minnesota	92.8%	27	Delaware	88.9%
4	Alaska	92.6%	30	Illinois	88.6%
5	North Dakota	92.5%	31	Indiana	88.2%
6	Wyoming	92.2%	32	Rhode Island	87.7%
7	Iowa	91.7%	33	Florida	87.6%
7	Maine	91.7%	34	Oklahoma	87.3%
7	Vermont	91.7%		US Average	87.1%
10	Utah	91.5%	35	North Carolina	86.6%
11	Wisconsin	91.4%	36	South Carolina	86.3%
12	Colorado	91.2%	37	Georgia	86.1%
13	South Dakota	91.1%	37	Arizona	86.1%
14	Nebraska	91.0%	37	Tennessee	86.1%
15	Hawaii	90.9%	40	West Virginia	86.0%
16	Washington	90.8%	40	New York	86.0%
17	Kansas	90.3%	42	Nevada	85.6%
18	Massachusetts	90.2%	43	Arkansas	85.4%
18	Connecticut	90.2%	44	Kentucky	85.1%
20	Michigan	90.1%	45	Alabama	84.9%
21	Oregon	90.0%	46	New Mexico	84.6%
21	Idaho	90.0%	46	Louisiana	84.6%
21	Ohio	89.7%	48	Mississippi	83.5%
21	Pennsylvania	89.7%	49	Texas	82.4%
25	Maryland	89.6%	50	California	82.2%
26	New Jersey	89.1%			

Year	Missouri			US Average
	Percent	Rank		Percent
2015	88.9%	27		87.1%
2014	88.9%	28		86.9%
2013	88.7%	27		86.6%

Source: census.gov

Education

Percent of Population with Bachelor's Degree: 2015



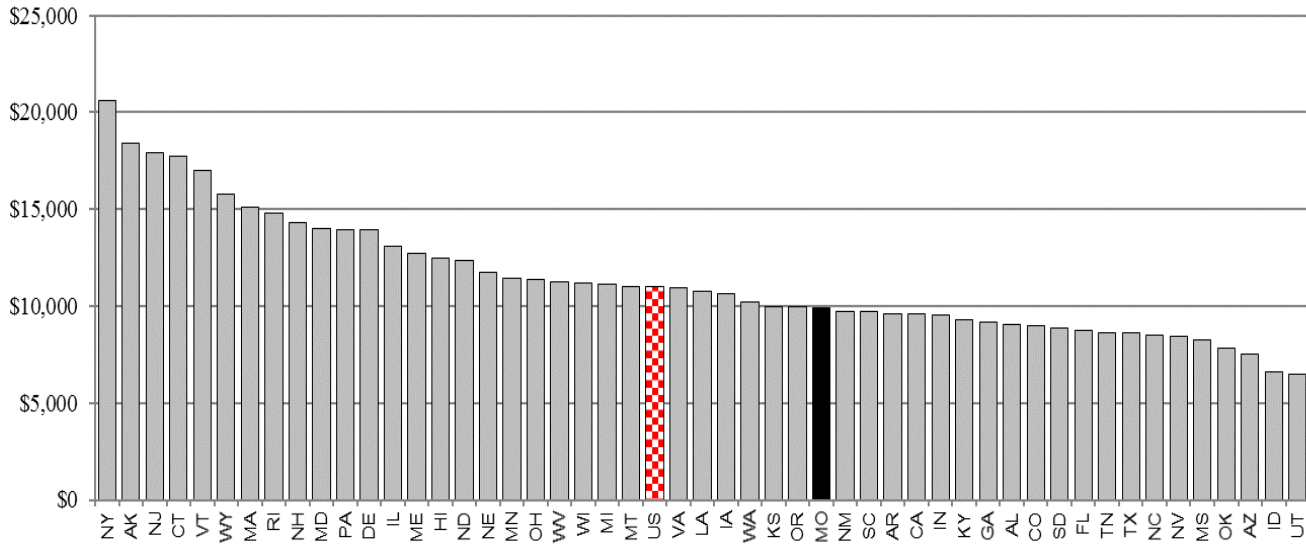
Rank	State	Percent	Rank	State	Percent
1	Massachusetts	41.5%	26	North Carolina	29.4%
2	Colorado	39.2%	27	North Dakota	29.1%
3	Maryland	38.8%	28	Florida	28.4%
4	Connecticut	38.3%	28	Wisconsin	28.4%
5	New Jersey	37.6%	28	Texas	28.4%
6	Virginia	37.0%	31	Missouri	27.8%
7	Vermont	36.9%	31	Michigan	27.8%
8	New Hampshire	35.7%	33	Arizona	27.7%
9	New York	35.0%	34	South Dakota	27.5%
10	Minnesota	34.7%	35	Iowa	26.8%
11	Washington	34.2%	35	South Carolina	26.8%
12	Illinois	32.9%	35	Ohio	26.8%
13	Rhode Island	32.7%	38	New Mexico	26.5%
14	California	32.3%	39	Wyoming	26.2%
15	Oregon	32.2%	40	Idaho	26.0%
16	Utah	31.8%	41	Tennessee	25.7%
17	Kansas	31.7%	42	Indiana	24.9%
18	Hawaii	31.4%	43	Oklahoma	24.6%
19	Delaware	30.9%	44	Alabama	24.2%
20	Montana	30.6%	45	Nevada	23.6%
	US Average	30.6%	46	Kentucky	23.3%
21	Nebraska	30.2%	47	Louisiana	23.2%
22	Maine	30.1%	48	Arkansas	21.8%
23	Georgia	29.9%	49	Mississippi	20.8%
24	Alaska	29.7%	50	West Virginia	19.6%
24	Pennsylvania	29.7%			

Year	Missouri		US Average
	Percent	Rank	Percent
2015	27.8%	31	30.6%
2014	27.5%	32	30.1%
2013	27.0%	33	29.6%

Source: census.gov

Education

Per Pupil State and Local Government Expenditures for Elementary and Secondary Education: 2014



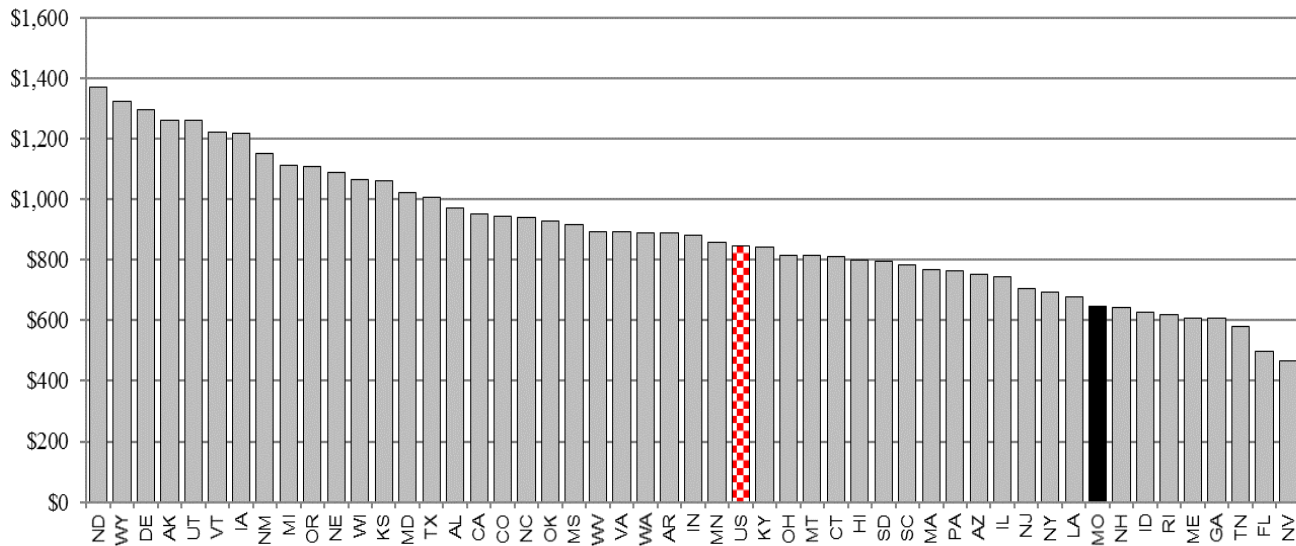
Rank	State	Dollars	Rank	State	Dollars
1	New York	\$20,610	26	Iowa	\$10,668
2	Alaska	\$18,416	27	Washington	\$10,202
3	New Jersey	\$17,907	28	Kansas	\$9,972
4	Connecticut	\$17,745	29	Oregon	\$9,945
5	Vermont	\$16,988	30	Missouri	\$9,875
6	Wyoming	\$15,797	31	New Mexico	\$9,734
7	Massachusetts	\$15,087	32	South Carolina	\$9,732
8	Rhode Island	\$14,767	33	Arkansas	\$9,616
9	New Hampshire	\$14,335	34	California	\$9,595
10	Maryland	\$14,003	35	Indiana	\$9,548
11	Pennsylvania	\$13,961	36	Kentucky	\$9,312
12	Delaware	\$13,938	37	Georgia	\$9,202
13	Illinois	\$13,077	38	Alabama	\$9,028
14	Maine	\$12,707	39	Colorado	\$8,985
15	Hawaii	\$12,458	40	South Dakota	\$8,881
16	North Dakota	\$12,358	41	Florida	\$8,755
17	Nebraska	\$11,726	42	Tennessee	\$8,630
18	Minnesota	\$11,464	43	Texas	\$8,593
19	Ohio	\$11,354	44	North Carolina	\$8,512
20	West Virginia	\$11,260	45	Nevada	\$8,414
21	Wisconsin	\$11,186	46	Mississippi	\$8,263
22	Michigan	\$11,110	47	Oklahoma	\$7,829
23	Montana	\$11,017	48	Arizona	\$7,528
	US Average	\$11,009	49	Idaho	\$6,621
24	Virginia	\$10,973	50	Utah	\$6,500
25	Louisiana	\$10,749			

Year	Missouri		US Average	
	Dollars	Rank	Dollars	
2014	\$9,875	30	\$11,009	
2013	\$9,597	29	\$11,094	
2012	\$9,436	31	\$10,608	

Source: census.gov, 2014 Public Elementary-Secondary Education Finance Data

Education

Per Capita State Expenditures for Higher Education: 2014



Rank	State	Dollars	Rank	State	Dollars
1	North Dakota	\$1,371	27	Minnesota	\$858
2	Wyoming	\$1,324		US Per Capita	\$844
3	Delaware	\$1,295	28	Kentucky	\$842
4	Alaska	\$1,262	29	Ohio	\$816
5	Utah	\$1,260	30	Montana	\$815
6	Vermont	\$1,221	31	Connecticut	\$810
7	Iowa	\$1,219	32	Hawaii	\$800
8	New Mexico	\$1,152	33	South Dakota	\$795
9	Michigan	\$1,111	34	South Carolina	\$785
10	Oregon	\$1,108	35	Massachusetts	\$766
11	Nebraska	\$1,087	36	Pennsylvania	\$764
12	Wisconsin	\$1,063	37	Arizona	\$754
13	Kansas	\$1,061	38	Illinois	\$744
14	Maryland	\$1,024	39	New Jersey	\$703
15	Texas	\$1,006	40	New York	\$694
16	Alabama	\$972	41	Louisiana	\$677
17	California	\$953	42	Missouri	\$645
18	Colorado	\$945	43	New Hampshire	\$643
19	North Carolina	\$939	44	Idaho	\$626
20	Oklahoma	\$928	45	Rhode Island	\$617
21	Mississippi	\$917	46	Maine	\$607
22	West Virginia	\$895	47	Georgia	\$607
23	Virginia	\$891	48	Tennessee	\$578
24	Washington	\$890	49	Florida	\$500
25	Arkansas	\$890	50	Nevada	\$468
26	Indiana	\$881			

Year	Missouri		US Per Capita
	Dollars	Rank	Dollars
2014	\$645	42	\$844
2013	\$660	42	\$825
2012	\$670	42	\$827

Source: census.gov



Missouri Statewide Performance Indicators: A National Comparison

Civic Involvement

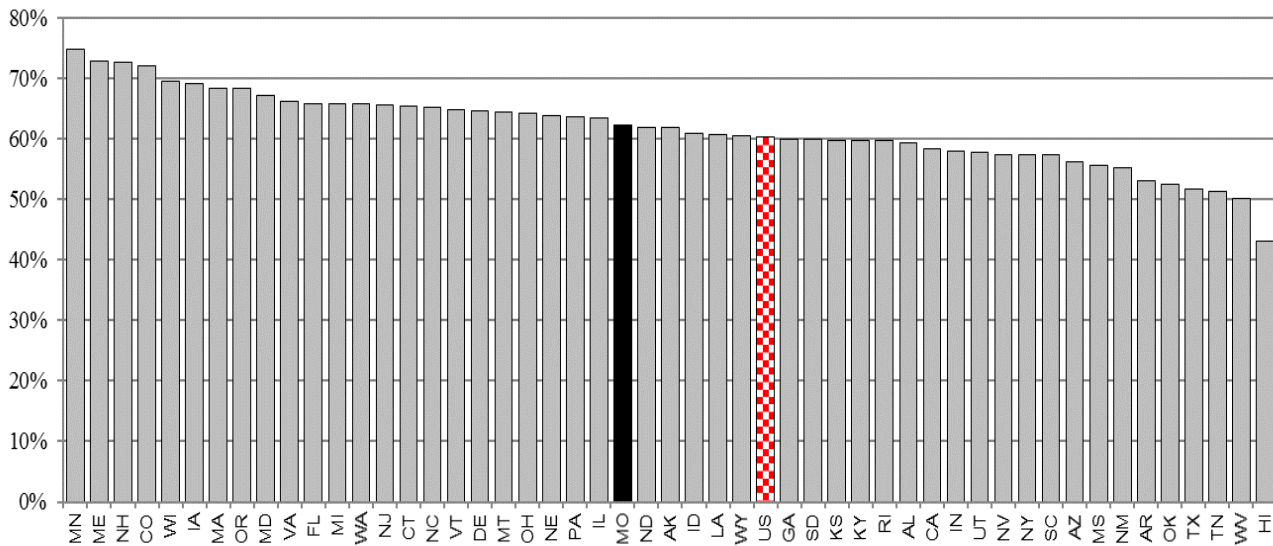
The following indicators were selected to measure the level of civic involvement by Missouri citizens:

Voter Turnout Rate, Presidential Election - The percent of the eligible voting age population who cast a ballot in the 2016 General Presidential Election. The data was reported by the United States Election Project at George Mason University. In 2016, Missouri ranked 24th, a decrease from 18th in the 2012 Presidential election, but a better turnout than the national average.

Voter Turnout Rate, Mid-Term Election - The percent of the eligible voting age population who cast a ballot in the 2014 General Mid-Term Election. The data was reported by the United States Election Project at George Mason University. In 2014, Missouri ranked 37th.

Civic Involvement

Voter Turnout Rate, Presidential Election: 2016



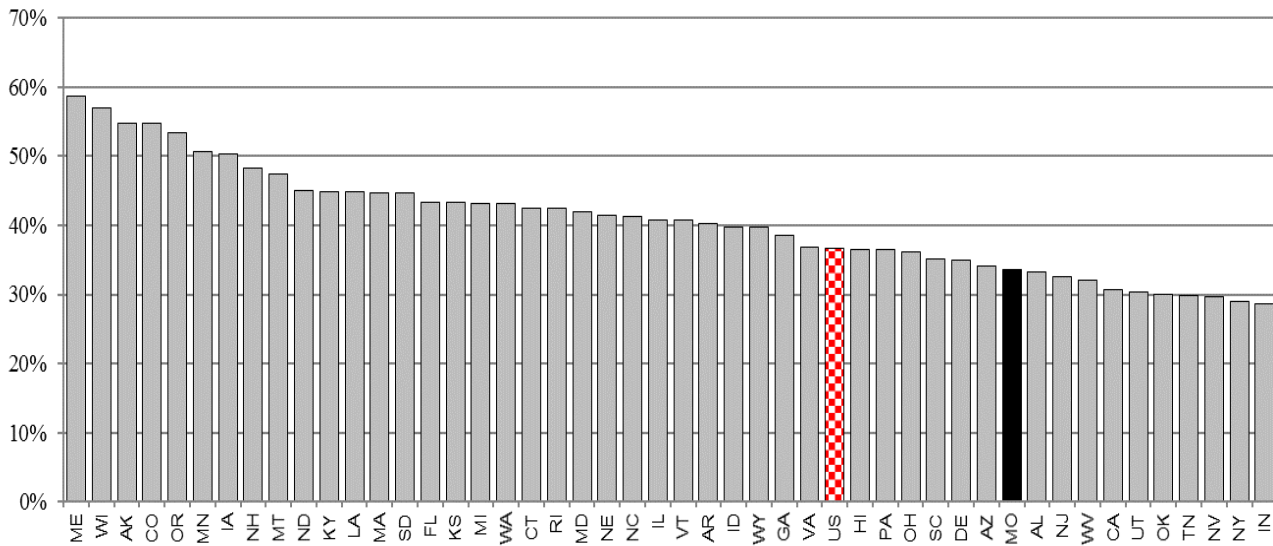
Rank	State	Percent	Rank	State	Percent
1	Minnesota	74.8%	27	Idaho	60.9%
2	Maine	72.8%	28	Louisiana	60.6%
3	New Hampshire	72.5%	29	Wyoming	60.4%
4	Colorado	72.1%		US Average	60.2%
5	Wisconsin	69.4%	30	Georgia	59.9%
6	Iowa	69.0%	30	South Dakota	59.9%
7	Massachusetts	68.3%	32	Kansas	59.7%
7	Oregon	68.3%	32	Kentucky	59.7%
9	Maryland	67.2%	32	Rhode Island	59.7%
10	Virginia	66.1%	35	Alabama	59.3%
11	Florida	65.7%	36	California	58.4%
11	Michigan	65.7%	37	Indiana	57.9%
11	Washington	65.7%	38	Utah	57.7%
14	New Jersey	65.5%	39	Nevada	57.3%
15	Connecticut	65.4%	39	New York	57.3%
16	North Carolina	65.2%	39	South Carolina	57.3%
17	Vermont	64.8%	42	Arizona	56.2%
18	Delaware	64.6%	43	Mississippi	55.6%
19	Montana	64.3%	44	New Mexico	55.2%
20	Ohio	64.2%	45	Arkansas	53.1%
21	Nebraska	63.8%	46	Oklahoma	52.4%
22	Pennsylvania	63.6%	47	Texas	51.6%
23	Illinois	63.4%	48	Tennessee	51.2%
24	Missouri	62.3%	49	West Virginia	50.1%
25	North Dakota	61.9%	50	Hawaii	43.0%
26	Alaska	61.8%			

Year	Missouri		US Average
	Percent	Rank	Percent
2016	62.3%	24	60.2%
2012	62.2%	18	58.6%
2008	68.2%	10	62.2%

Source: electproject.org

Civic Involvement

Voter Turnout Rate, Mid-Term Election: 2014



Rank	State	Percent	Rank	State	Percent
1	Maine	58.7%	27	Idaho	39.8%
2	Wisconsin	56.9%	28	Wyoming	39.7%
3	Alaska	54.8%	29	Georgia	38.6%
4	Colorado	54.7%	30	Virginia	36.8%
5	Oregon	53.4%		US Average	36.7%
6	Minnesota	50.6%	31	Hawaii	36.5%
7	Iowa	50.3%	31	Pennsylvania	36.5%
8	New Hampshire	48.3%	33	Ohio	36.2%
9	Montana	47.5%	34	South Carolina	35.2%
10	North Dakota	45.0%	35	Delaware	34.9%
11	Kentucky	44.9%	36	Arizona	34.1%
11	Louisiana	44.9%	37	Missouri	33.6%
13	Massachusetts	44.7%	38	Alabama	33.2%
13	South Dakota	44.7%	39	New Jersey	32.5%
15	Florida	43.3%	40	West Virginia	32.0%
15	Kansas	43.3%	41	California	30.7%
17	Michigan	43.2%	42	Utah	30.3%
18	Washington	43.1%	43	Oklahoma	30.0%
19	Connecticut	42.5%	44	Tennessee	29.8%
20	Rhode Island	42.4%	45	Nevada	29.6%
21	Maryland	42.0%	46	New York	29.0%
22	Nebraska	41.4%	47	Indiana	28.7%
23	North Carolina	41.2%		Mississippi	no data
24	Illinois	40.8%		New Mexico	no data
24	Vermont	40.8%		Texas	no data
26	Arkansas	40.3%			

Year	Missouri		US Average
	Percent	Rank	Percent
2014	33.6%	37	36.7%
2010	45.7%	21	41.8%
2006	51.2%	11	41.3%

Source: electproject.org



Missouri Statewide Performance Indicators: A National Comparison

Health

The following indicators were selected to evaluate the health of Missouri citizens:

Percent of Population who are Adult Smokers - The percent of adults age 18 and older who report themselves to be smokers. This data was reported by the Centers for Disease Control. In 2015, Missouri ranked 46th with a rate significantly higher than the national average.

Percent of Population who are Overweight or Obese - The percent of the population who have a body mass index (BMI) of 30 or greater. The data was reported by the Centers for Disease Control. In 2014, Missouri ranked 28th with a rate higher than the national average.

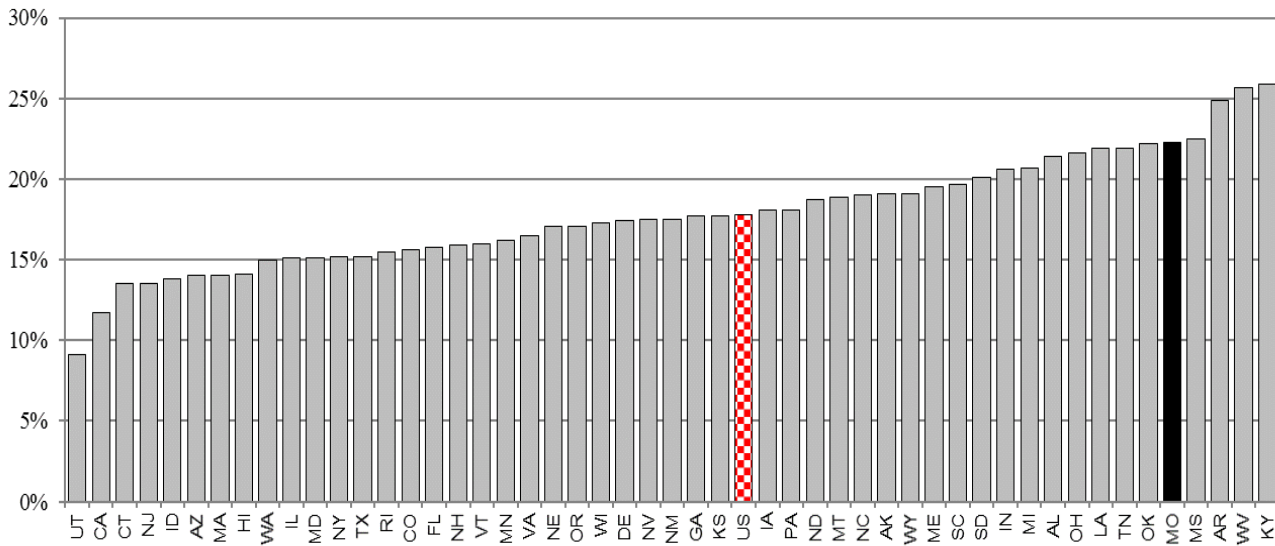
Teen Birth Rate - The number of births to teenage women, age 15 to 19, per 1,000 women in the state. The data was reported by the Centers for Disease Control. In 2015, Missouri ranked 30th with a higher rate of teen births than the national average.

Percent of Population without Health Insurance - The percent of the population that does not have any form of health insurance. The data was reported by the Census Bureau. In 2015, Missouri ranked 31st with a rate slightly above the national average.

Per Capita State Medicaid Expenditures - Estimates the per capita state Medicaid expenditures based on total federal fiscal year 2015 Medicaid expenditures and 2015 population. The data was reported by the Medicaid and CHIP Payment and Access Commission and the Census Bureau. In 2015, Missouri ranked 23rd with per capita Medicaid expenditures slightly below the national average.

Health

Percent of Population who are Adult Smokers: 2015



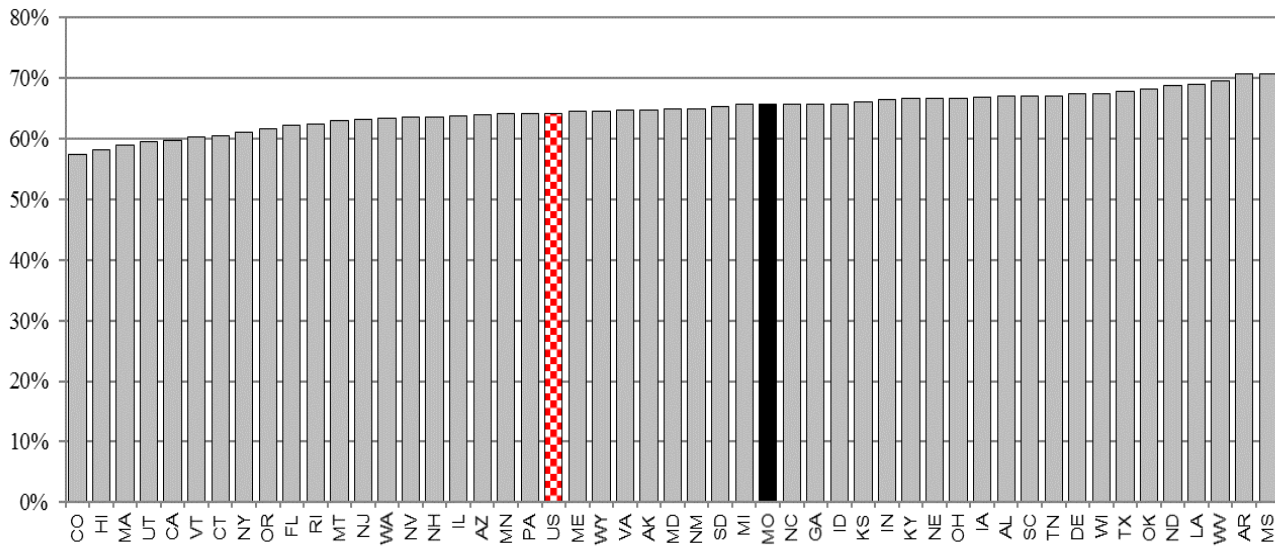
Rank	State	Percent	Rank	State	Percent
1	Utah	9.1%	27	Georgia	17.7%
2	California	11.7%	27	Kansas	17.7%
3	Connecticut	13.5%		US Average	17.8%
3	New Jersey	13.5%	29	Iowa	18.1%
5	Idaho	13.8%	29	Pennsylvania	18.1%
6	Arizona	14.0%	31	North Dakota	18.7%
6	Massachusetts	14.0%	32	Montana	18.9%
8	Hawaii	14.1%	33	North Carolina	19.0%
9	Washington	15.0%	34	Alaska	19.1%
10	Illinois	15.1%	34	Wyoming	19.1%
10	Maryland	15.1%	36	Maine	19.5%
12	New York	15.2%	37	South Carolina	19.7%
12	Texas	15.2%	38	South Dakota	20.1%
14	Rhode Island	15.5%	39	Indiana	20.6%
15	Colorado	15.6%	40	Michigan	20.7%
16	Florida	15.8%	41	Alabama	21.4%
17	New Hampshire	15.9%	42	Ohio	21.6%
18	Vermont	16.0%	43	Louisiana	21.9%
19	Minnesota	16.2%	43	Tennessee	21.9%
20	Virginia	16.5%	45	Oklahoma	22.2%
21	Nebraska	17.1%	46	Missouri	22.3%
21	Oregon	17.1%	47	Mississippi	22.5%
23	Wisconsin	17.3%	48	Arkansas	24.9%
24	Delaware	17.4%	49	West Virginia	25.7%
25	Nevada	17.5%	50	Kentucky	25.9%
25	New Mexico	17.5%			

Year	Missouri		US Average
	Percent	Rank	Percent
2015	22.3%	46	17.8%
2014	20.6%	38	18.5%
2013	22.1%	41	19.3%

Source: cdc.gov

Health

Percent of Population who are Overweight or Obese: 2014



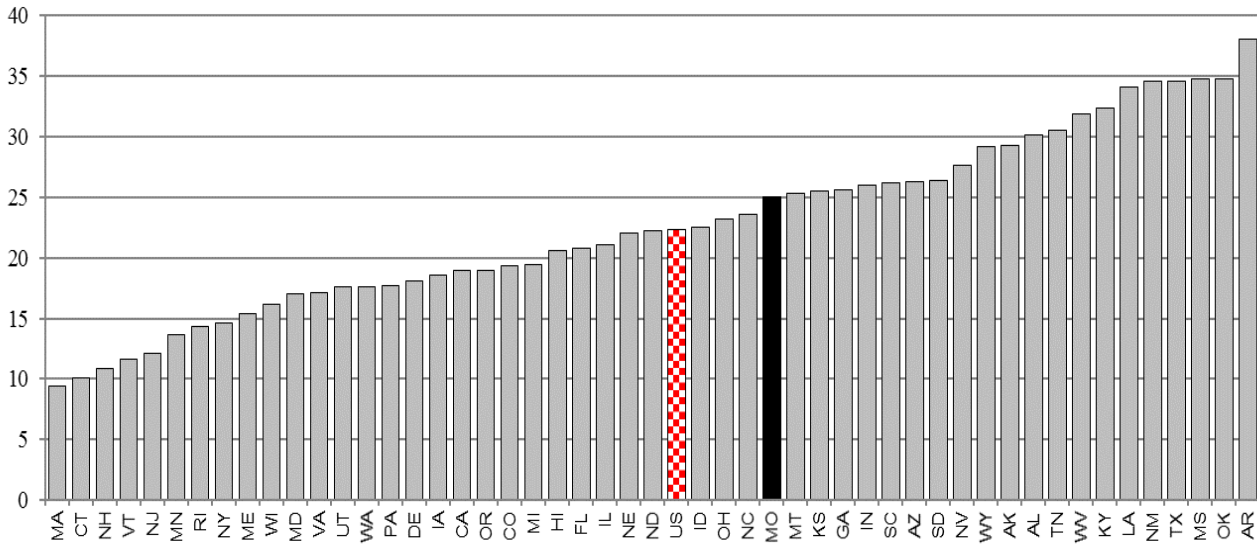
Rank	State	Percent	Rank	State	Percent
1	Colorado	57.4%	25	New Mexico	64.9%
2	Hawaii	58.1%	27	South Dakota	65.2%
3	Massachusetts	58.9%	28	Michigan	65.6%
4	Utah	59.5%	28	Missouri	65.6%
5	California	59.7%	28	North Carolina	65.6%
6	Vermont	60.2%	31	Georgia	65.7%
7	Connecticut	60.4%	31	Idaho	65.7%
8	New York	61.1%	33	Kansas	66.0%
9	Oregon	61.7%	34	Indiana	66.5%
10	Florida	62.2%	35	Kentucky	66.7%
11	Rhode Island	62.4%	35	Nebraska	66.7%
12	Montana	63.0%	35	Ohio	66.7%
13	New Jersey	63.1%	38	Iowa	66.9%
14	Washington	63.4%	39	Alabama	67.0%
15	Nevada	63.5%	39	South Carolina	67.0%
16	New Hampshire	63.6%	41	Tennessee	67.1%
17	Illinois	63.8%	42	Delaware	67.4%
18	Arizona	64.0%	42	Wisconsin	67.4%
19	Minnesota	64.1%	44	Texas	67.8%
19	Pennsylvania	64.1%	45	Oklahoma	68.2%
	US Average	64.1%	46	North Dakota	68.8%
21	Maine	64.5%	47	Louisiana	68.9%
22	Wyoming	64.6%	48	West Virginia	69.6%
23	Virginia	64.7%	49	Arkansas	70.6%
24	Alaska	64.8%	50	Mississippi	70.7%
25	Maryland	64.9%			

Year	Missouri		US Average
	Percent	Rank	Percent
2014	65.6%	28	64.1%
2013	65.5%	31	63.8%
2012	65.8%	38	63.4%

Source: cdc.gov

Health

Teen Birth Rate, Births per 1,000 Women: 2015



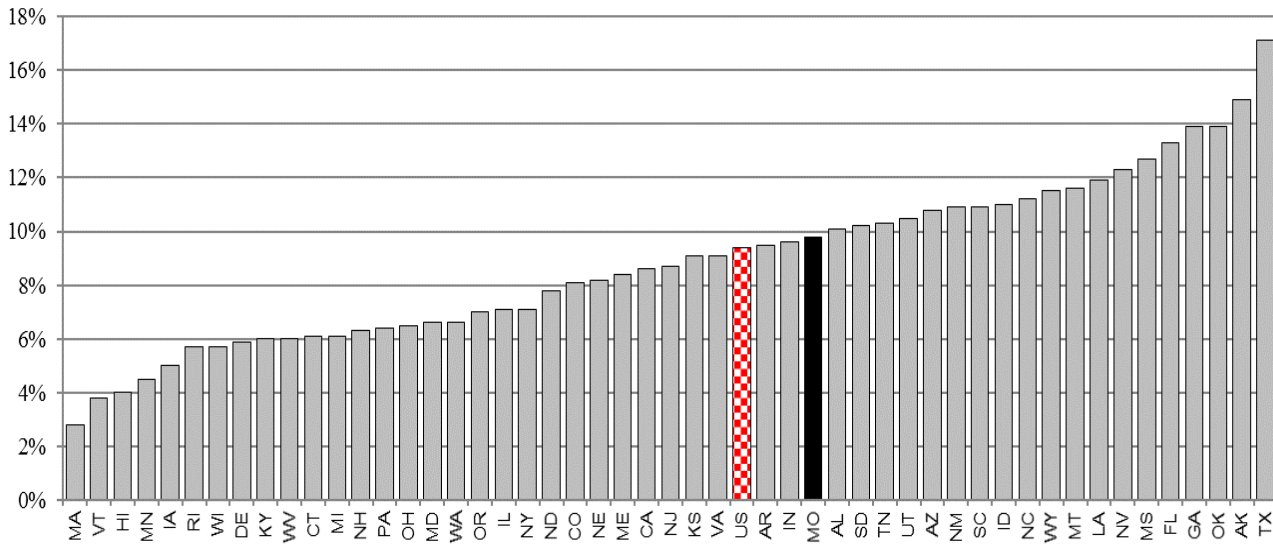
Rank	State	Rate	Rank	State	Rate
1	Massachusetts	9.4		US Average	22.3
2	Connecticut	10.1	27	Idaho	22.5
3	New Hampshire	10.9	28	Ohio	23.2
4	Vermont	11.6	29	North Carolina	23.6
5	New Jersey	12.1	30	Missouri	25.0
6	Minnesota	13.7	31	Montana	25.3
7	Rhode Island	14.3	32	Kansas	25.5
8	New York	14.6	33	Georgia	25.6
9	Maine	15.4	34	Indiana	26.0
10	Wisconsin	16.2	35	South Carolina	26.2
11	Maryland	17.0	36	Arizona	26.3
12	Virginia	17.1	37	South Dakota	26.4
13	Utah	17.6	38	Nevada	27.6
13	Washington	17.6	39	Wyoming	29.2
15	Pennsylvania	17.7	40	Alaska	29.3
16	Delaware	18.1	41	Alabama	30.1
17	Iowa	18.6	42	Tennessee	30.5
18	California	19.0	43	West Virginia	31.9
18	Oregon	19.0	44	Kentucky	32.4
20	Colorado	19.3	45	Louisiana	34.1
21	Michigan	19.4	46	New Mexico	34.6
22	Hawaii	20.6	46	Texas	34.6
23	Florida	20.8	48	Mississippi	34.8
24	Illinois	21.1	48	Oklahoma	34.8
25	Nebraska	22.0	50	Arkansas	38.0
26	North Dakota	22.2			

Year	Missouri		US Average
	Rate	Rank	Rate
2015	25.0	30	22.3
2014	27.2	32	24.2
2013	30.0	33	26.5

Source: cdc.gov

Health

Percent of Population without Health Insurance: 2015

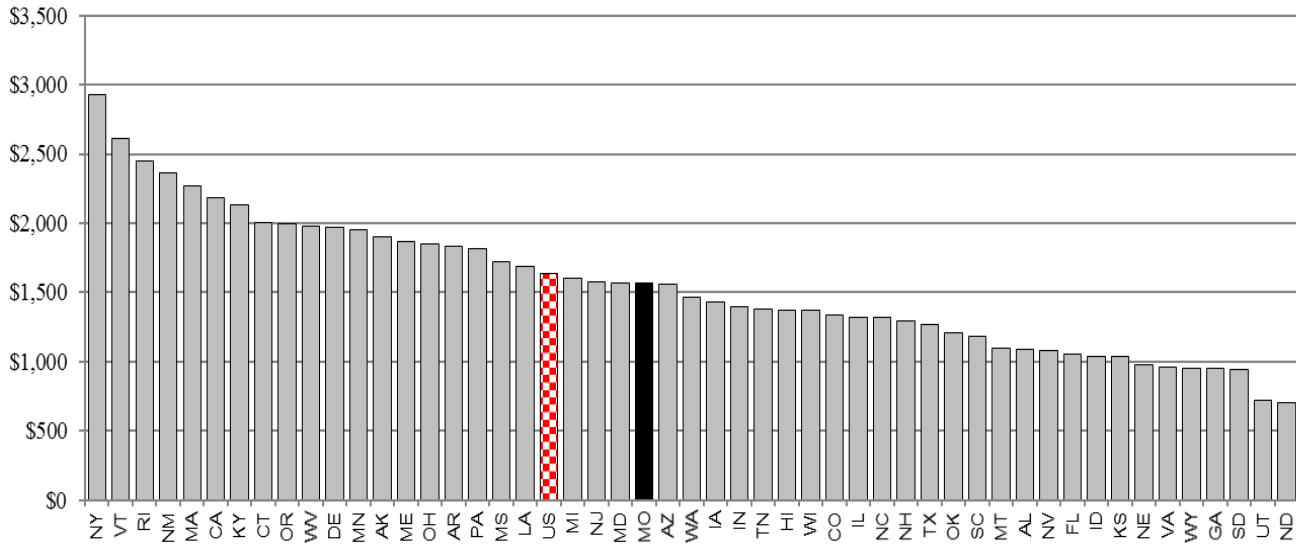


Rank	State	Percent	Rank	State	Percent
1	Massachusetts	2.8%	27	Kansas	9.1%
2	Vermont	3.8%	27	Virginia	9.1%
3	Hawaii	4.0%		US Average	9.4%
4	Minnesota	4.5%	29	Arkansas	9.5%
5	Iowa	5.0%	30	Indiana	9.6%
6	Rhode Island	5.7%	31	Missouri	9.8%
6	Wisconsin	5.7%	32	Alabama	10.1%
8	Delaware	5.9%	33	South Dakota	10.2%
9	Kentucky	6.0%	34	Tennessee	10.3%
9	West Virginia	6.0%	35	Utah	10.5%
11	Connecticut	6.1%	36	Arizona	10.8%
11	Michigan	6.1%	37	New Mexico	10.9%
13	New Hampshire	6.3%	37	South Carolina	10.9%
14	Pennsylvania	6.4%	39	Idaho	11.0%
15	Ohio	6.5%	40	North Carolina	11.2%
16	Maryland	6.6%	41	Wyoming	11.5%
16	Washington	6.6%	42	Montana	11.6%
18	Oregon	7.0%	43	Louisiana	11.9%
19	Illinois	7.1%	44	Nevada	12.3%
19	New York	7.1%	45	Mississippi	12.7%
21	North Dakota	7.8%	46	Florida	13.3%
22	Colorado	8.1%	47	Georgia	13.9%
23	Nebraska	8.2%	47	Oklahoma	13.9%
24	Maine	8.4%	49	Alaska	14.9%
25	California	8.6%	50	Texas	17.1%
26	New Jersey	8.7%			

Year	Missouri		US Average
	Percent	Rank	Percent
2015	9.8%	31	9.4%
2014	11.7%	29	11.7%
2013	13.0%	23	14.5%

Health

Per Capita State Medicaid Expenditures: 2015



Rank	State	Dollars	Rank	State	Dollars
1	New York	\$2,932	26	Iowa	\$1,434
2	Vermont	\$2,608	27	Indiana	\$1,399
3	Rhode Island	\$2,449	28	Tennessee	\$1,379
4	New Mexico	\$2,365	29	Hawaii	\$1,374
5	Massachusetts	\$2,267	30	Wisconsin	\$1,369
6	California	\$2,179	31	Colorado	\$1,340
7	Kentucky	\$2,130	32	Illinois	\$1,319
8	Connecticut	\$2,004	33	North Carolina	\$1,317
9	Oregon	\$1,995	34	New Hampshire	\$1,290
10	West Virginia	\$1,981	35	Texas	\$1,265
11	Delaware	\$1,970	36	Oklahoma	\$1,204
12	Minnesota	\$1,953	37	South Carolina	\$1,178
13	Alaska	\$1,905	38	Montana	\$1,097
14	Maine	\$1,863	39	Alabama	\$1,085
15	Ohio	\$1,846	40	Nevada	\$1,077
16	Arkansas	\$1,837	41	Florida	\$1,053
17	Pennsylvania	\$1,815	42	Idaho	\$1,038
18	Mississippi	\$1,718	43	Kansas	\$1,036
19	Louisiana	\$1,684	44	Nebraska	\$975
	US Per Capita	\$1,632	45	Virginia	\$960
20	Michigan	\$1,600	46	Wyoming	\$953
21	New Jersey	\$1,572	47	Georgia	\$948
22	Maryland	\$1,570	48	South Dakota	\$939
23	Missouri	\$1,567	49	Utah	\$718
24	Arizona	\$1,557	50	North Dakota	\$705
25	Washington	\$1,466			

Year	Missouri		US Per Capita	
	Dollars	Rank	Dollars	
2015	\$1,567	23	\$1,632	
2014	\$1,457	21	\$1,468	
2013	\$1,365	16	\$1,269	

Source: Medicaid and CHIP Payment and Access Commission and census.gov



Missouri Statewide Performance Indicators: A National Comparison

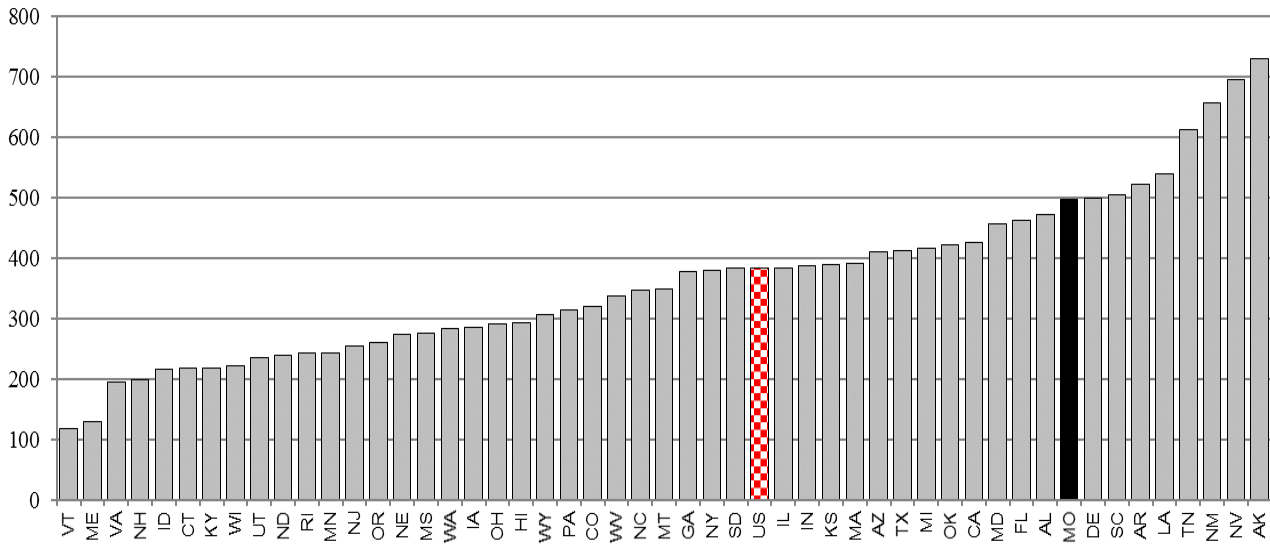
Crime

The following indicators were selected to measure the frequency of crime in Missouri:

Violent Crime Rate - The violent crime rate is composed of four offenses: murder and non-negligent manslaughter, forcible rape, robbery, and aggravated assault. Violent crimes are defined as those offenses involving force or threat of force. The rate is computed as the number of these violent crimes per 100,000 inhabitants. The data was reported by the Federal Bureau of Investigation. In 2015, Missouri ranked 42nd with a violent crime rate higher than the national average.

Property Crime Rate - The property crime rate is composed of offenses such as burglary, larceny-theft, motor vehicle theft, and arson. There is no force or threat of force against the victims. The rate is computed as the number of these property crimes per 100,000 inhabitants. The data was reported by the Federal Bureau of Investigation. In 2015, Missouri ranked 37th with a property crime rate higher than the national average.

Violent Crime Rate, per 100,000 Inhabitants: 2015



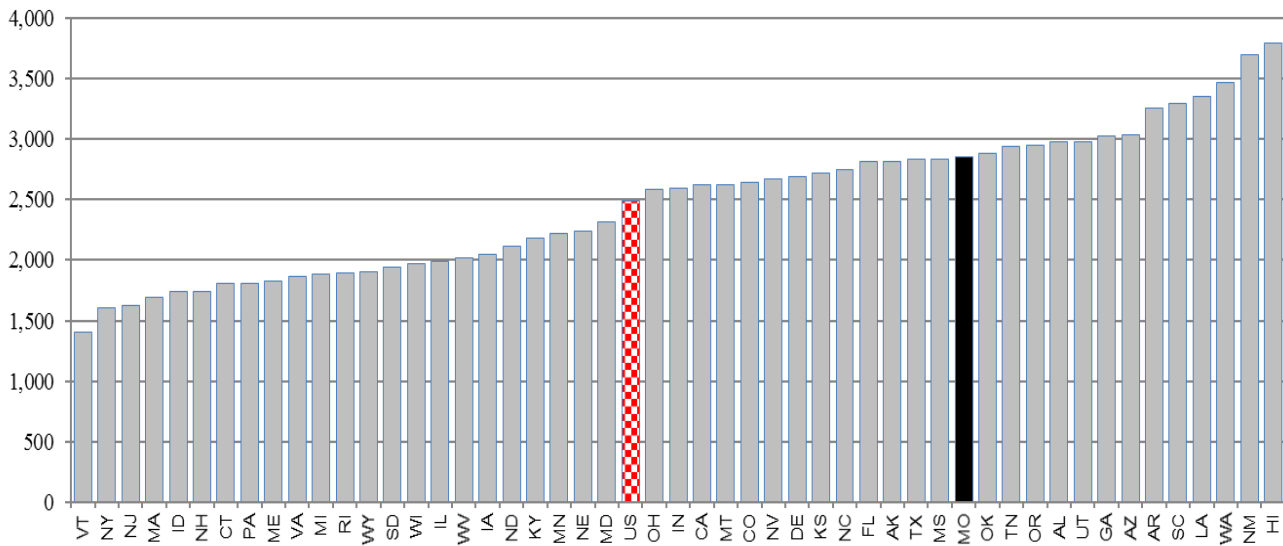
Rank	State	Rate	Rank	State	Rate
1	Vermont	118.0	27	Georgia	378.3
2	Maine	130.1	28	New York	379.7
3	Virginia	195.6	29	South Dakota	383.1
4	New Hampshire	199.3		US Average	383.2
5	Idaho	215.6	30	Illinois	383.8
6	Connecticut	218.5	31	Indiana	387.5
7	Kentucky	218.7	32	Kansas	389.9
8	Wyoming	222.1	33	Massachusetts	390.9
9	Utah	236.0	34	Arizona	410.2
10	North Dakota	239.4	35	Texas	412.2
11	Rhode Island	242.5	36	Michigan	415.5
12	Minnesota	242.6	37	Oklahoma	422.0
13	New Jersey	255.4	38	California	426.3
14	Oregon	259.8	39	Maryland	457.2
15	Nebraska	274.9	40	Florida	461.9
16	Mississippi	275.8	41	Alabama	472.4
17	Washington	284.4	42	Missouri	497.4
18	Iowa	286.1	43	Delaware	499.0
19	Ohio	291.9	44	South Carolina	504.5
20	Hawaii	293.4	45	Arkansas	521.3
21	Wisconsin	305.8	46	Louisiana	539.7
22	Pennsylvania	315.1	47	Tennessee	612.1
23	Colorado	321.0	48	New Mexico	656.1
24	West Virginia	337.9	49	Nevada	695.9
25	North Carolina	347.0	50	Alaska	730.2
26	Montana	349.6			

Year	Missouri		US Average
	Rate	Rank	Rate
2015	497.4	42	383.2
2014	442.9	40	375.7
2013	433.7	37	379.1

Source: fbi.gov

Crime

Property Crime Rate, per 100,000 Inhabitants: 2015



Rank	State	Rate	Rank	State	Rate
1	Vermont	1,406.6	26	California	2,618.3
2	New York	1,604.0	27	Montana	2,623.6
3	New Jersey	1,626.5	28	Colorado	2,641.5
4	Massachusetts	1,690.7	29	Nevada	2,668.3
5	Idaho	1,743.8	30	Delaware	2,691.0
6	New Hampshire	1,745.7	31	Kansas	2,720.1
7	Connecticut	1,812.0	32	North Carolina	2,750.1
8	Pennsylvania	1,812.8	33	Florida	2,813.2
9	Maine	1,830.0	34	Alaska	2,817.6
10	Virginia	1,866.5	35	Texas	2,831.3
11	Michigan	1,885.6	36	Mississippi	2,833.6
12	Rhode Island	1,897.5	37	Missouri	2,854.2
13	Wyoming	1,902.6	38	Oklahoma	2,885.9
14	South Dakota	1,943.0	39	Tennessee	2,936.2
15	Wisconsin	1,974.0	40	Oregon	2,946.6
16	Illinois	1,988.6	41	Alabama	2,978.9
17	West Virginia	2,020.0	42	Utah	2,980.0
18	Iowa	2,047.3	43	Georgia	3,022.3
19	North Dakota	2,116.5	44	Arizona	3,033.2
20	Kentucky	2,177.6	45	Arkansas	3,251.5
21	Minnesota	2,222.1	46	South Carolina	3,293.3
22	Nebraska	2,241.1	47	Louisiana	3,353.4
23	Maryland	2,315.0	48	Washington	3,463.8
	US Average	2,487.0	49	New Mexico	3,697.4
24	Ohio	2,587.7	50	Hawaii	3,796.2
25	Indiana	2,596.0			

Year	Missouri		US Average
	Rate	Rank	Rate
2015	2,854.2	37	2,487.0
2014	2,906.5	35	2,596.1
2013	3,137.4	36	2,730.7

Source: fbi.gov



Missouri Statewide Performance Indicators: A National Comparison

Transportation

The following indicators were selected to measure transportation funding and the condition of Missouri's roads and bridges:

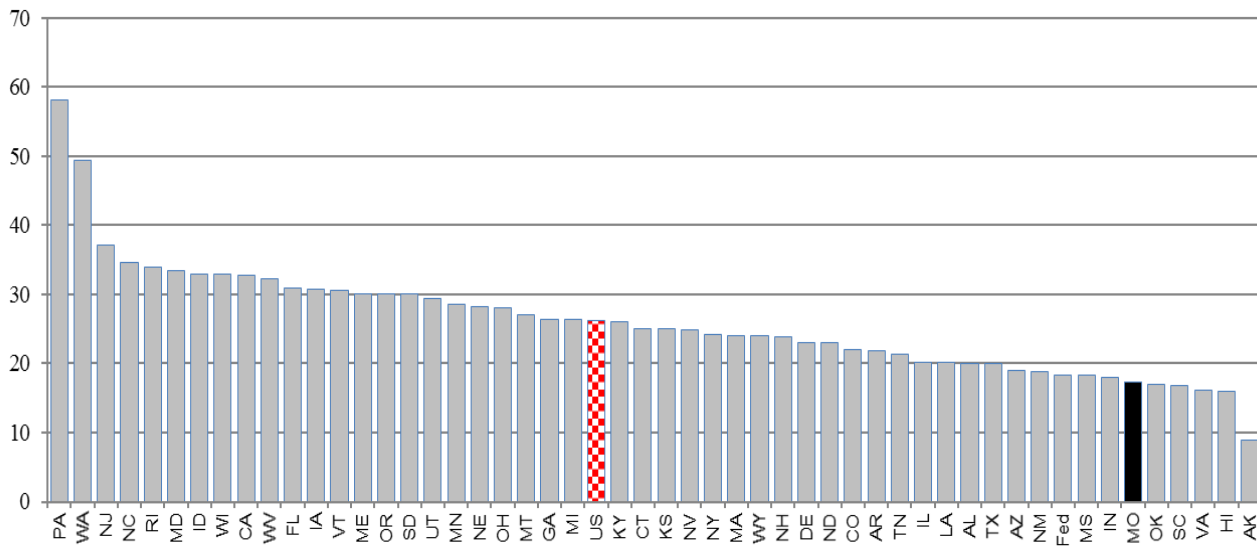
State Gasoline Tax - The amount of tax levied, in cents, by a state on the sale of one gallon of gasoline. The data was reported by the Federation of Tax Administrators and the Tax Policy Center. In 2017, Missouri ranked 45th with a gas tax below the national average.

Percent of Roads in Mediocre or Poor Condition - The percent of all roadways in a state that are in mediocre or poor condition as defined by the Federal Highway Administration. The Bureau of Transportation Statistics reported the data for this indicator. In 2013, Missouri ranked 27th with a rate matching the national average.

Percent of Bridges that are Deficient or Functionally Obsolete - The percent of bridges that are structurally deficient or functionally obsolete as defined by the Federal Highway Administration. The Bureau of Transportation Statistics reported the data for this indicator. In 2014, Missouri ranked 33rd with a rate slightly higher than the national average.

Transportation

State Gasoline Tax, in Cents: 2017



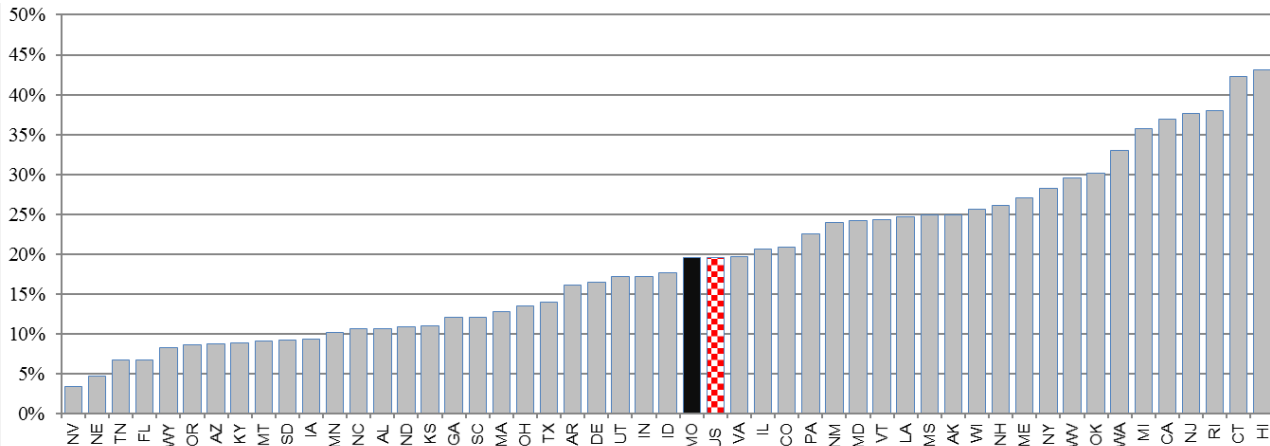
Rank	State	Tax	Rank	State	Tax
1	Pennsylvania	58.2	25	Kansas	25.0
2	Washington	49.4	27	Nevada	24.8
3	New Jersey	37.1	28	New York	24.2
4	North Carolina	34.6	29	Massachusetts	24.0
5	Rhode Island	34.0	29	Wyoming	24.0
6	Maryland	33.5	31	New Hampshire	23.8
7	Idaho	33.0	32	Delaware	23.0
8	Wisconsin	32.9	32	North Dakota	23.0
9	California	32.8	34	Colorado	22.0
10	West Virginia	32.2	35	Arkansas	21.8
11	Florida	30.9	36	Tennessee	21.4
12	Iowa	30.7	37	Illinois	20.1
13	Vermont	30.5	37	Louisiana	20.1
14	Maine	30.0	39	Alabama	20.0
14	Oregon	30.0	39	Texas	20.0
14	South Dakota	30.0	41	Arizona	19.0
17	Utah	29.4	42	New Mexico	18.9
18	Minnesota	28.6		Federal Tax	18.4
19	Nebraska	28.2	43	Mississippi	18.4
20	Ohio	28.0	44	Indiana	18.0
21	Montana	27.0	45	Missouri	17.3
22	Georgia	26.3	46	Oklahoma	17.0
22	Michigan	26.3	47	South Carolina	16.8
	US Average	26.2	48	Virginia	16.2
24	Kentucky	26.0	49	Hawaii	16.0
25	Connecticut	25.0	50	Alaska	9.0

Year	Missouri		US Average	
	Tax	Rank	Tax	
2017	17.3	45	26.2	
2016	17.3	44	25.3	
2015	17.3	44	24.7	

Source: taxadmin.org and taxpolicycenter.org

Transportation

Percent of Roads in Mediocre or Poor Condition: 2013



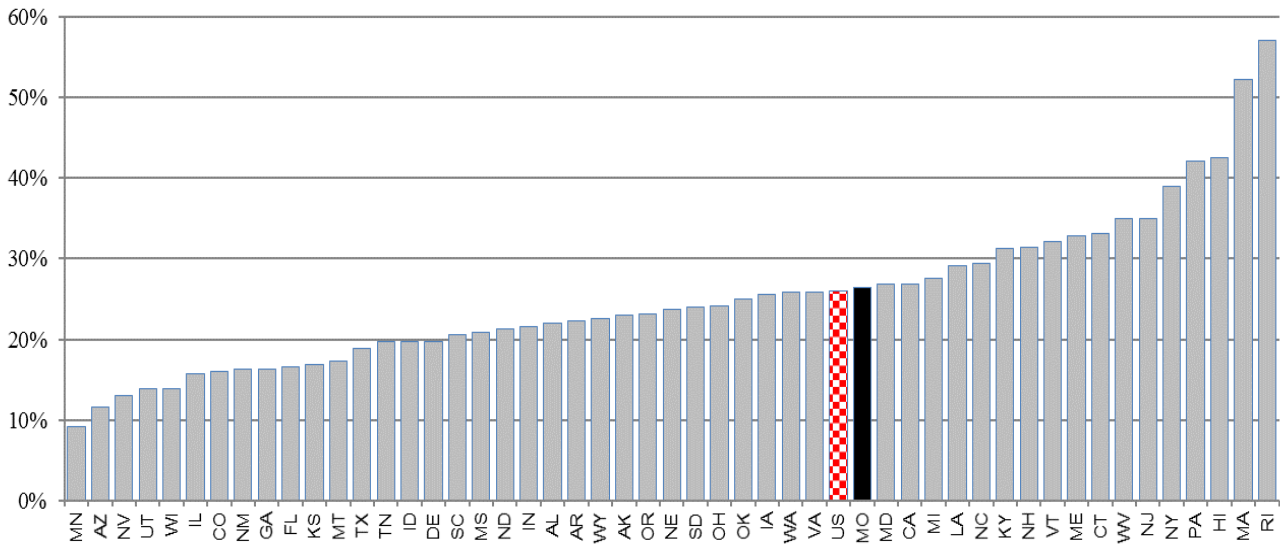
Rank	State	Percent	Rank	State	Percent
1	Nevada	3.4%	27	Missouri	19.6%
2	Nebraska	4.7%		US Average	19.6%
3	Tennessee	6.8%	28	Virginia	19.7%
4	Florida	6.8%	29	Illinois	20.6%
5	Wyoming	8.3%	30	Colorado	20.9%
6	Oregon	8.7%	31	Pennsylvania	22.6%
7	Arizona	8.7%	32	New Mexico	24.0%
8	Kentucky	8.9%	33	Maryland	24.2%
9	Montana	9.1%	34	Vermont	24.3%
10	South Dakota	9.2%	35	Louisiana	24.6%
11	Iowa	9.3%	36	Mississippi	24.9%
12	Minnesota	10.2%	37	Alaska	24.9%
13	North Carolina	10.6%	38	Wisconsin	25.6%
14	Alabama	10.7%	39	New Hampshire	26.1%
15	North Dakota	10.9%	40	Maine	27.0%
15	Kansas	11.0%	41	New York	28.2%
17	Georgia	12.0%	42	West Virginia	29.5%
18	South Carolina	12.1%	43	Oklahoma	30.1%
19	Massachusetts	12.8%	44	Washington	33.0%
20	Ohio	13.5%	45	Michigan	35.7%
21	Texas	14.0%	45	California	36.9%
22	Arkansas	16.1%	47	New Jersey	37.6%
23	Delaware	16.4%	48	Rhode Island	38.0%
24	Utah	17.1%	48	Connecticut	42.3%
25	Indiana	17.2%	50	Hawaii	43.1%
26	Idaho	17.7%			

Year	Missouri		US Average
	Percent	Rank	Percent
2013	19.6%	27	19.6%
2012	23.2%	32	20.1%
2011	6.2%	4	20.9%

Source: rita.dot.gov/bts

Transportation

Percent of Bridges that are Deficient or Functionally Obsolete: 2014



Rank	State	Percent	Rank	State	Percent
1	Minnesota	9.3%	27	South Dakota	24.0%
2	Arizona	11.7%	28	Ohio	24.2%
3	Nevada	13.1%	29	Oklahoma	25.0%
4	Utah	13.9%	30	Iowa	25.5%
5	Wisconsin	14.0%	31	Washington	25.8%
6	Illinois	15.8%	32	Virginia	25.9%
7	Colorado	16.0%		US Average	26.0%
8	New Mexico	16.3%	33	Missouri	26.5%
8	Georgia	16.3%	34	Maryland	26.9%
10	Florida	16.7%	34	California	26.9%
11	Kansas	16.9%	36	Michigan	27.6%
12	Montana	17.4%	37	Louisiana	29.2%
13	Texas	18.9%	38	North Carolina	29.5%
14	Tennessee	19.7%	39	Kentucky	31.3%
15	Idaho	19.8%	40	New Hampshire	31.5%
15	Delaware	19.8%	41	Vermont	32.1%
17	South Carolina	20.6%	42	Maine	32.9%
18	Mississippi	20.9%	43	Connecticut	33.1%
19	North Dakota	21.3%	44	West Virginia	34.9%
20	Indiana	21.6%	44	New Jersey	34.9%
21	Alabama	22.0%	46	New York	38.9%
22	Arkansas	22.3%	47	Pennsylvania	42.1%
23	Wyoming	22.6%	48	Hawaii	42.5%
24	Alaska	23.0%	49	Massachusetts	52.2%
25	Oregon	23.2%	50	Rhode Island	57.0%
26	Nebraska	23.7%			

Year	Missouri		US Average
	Percent	Rank	Percent
2014	26.5%	33	26.0%
2013	27.2%	33	26.5%
2012	28.3%	33	27.0%

Source: rita.dot.gov/bts